



Premium Quality

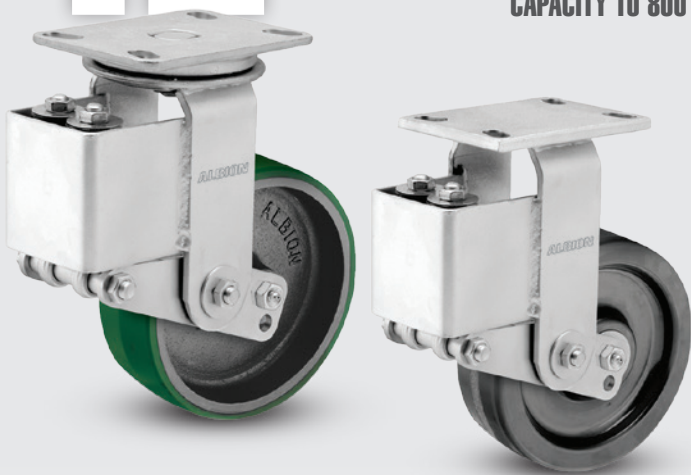


Environmentally Friendly

42

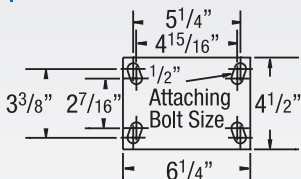
Heavy Duty Spring-Loaded Kingpin Casters

CAPACITY TO 800

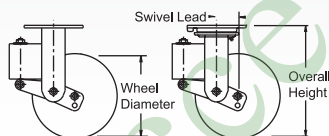
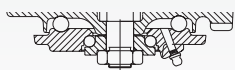


Designed with greater load capacity than our 40 series, this series protects from damaging shocks or unwanted vibration and movement. Noise levels are reduced through the dampening effect of these casters.

MOUNTING OPTION



SWIVEL CROSS SECTION



TYPICAL APPLICATIONS

- Shock sensitive carts
- Aircraft jacks
- Monitoring equipment
- Material handling equipment
- Computer equipment

FEATURES

- **Load Springs:** Maximum rated capacity loads will deflect wheel approximately 5/8" (50%). Different load springs for each series permits wide variation in ride "softness." They can be preloaded to obtain various degrees of deflection Top
- **Top Plate & Yoke Base:** AISI 1045 drop forged steel for extended service life
- **Swivel Section:** Double ball bearing with coined "deep-groove" load and machined thrust raceways provide optimal performance under extreme loads
- **Legs:** 1/4" steel, formed to increase strength
- **King Bolt:** 3/4" diameter heat treated bolt and nut for enhanced shock load capacity
- **Axle:** 1/2" diameter hollow axle with lock nut for easy lubrication of wheels with straight roller bearing. Solid axle for 28 ball bearing
- **Lubrication:** Zerk fitting in swivel section and in recessed head of hollow axle
- Alternate or custom caster configurations available

RIG OPTIONS

- Neoprene sealed swivel section specify **SS05**
- Available with **kingpinless** section, consult factory

BRAKE OPTIONS

Single Side and Double Sided Brakes available, consult factory

Swivel Lock available (welded), consult factory

BEARING OPTIONS



+ For swivel models add "S", for rigid model add "R" to end of base caster number.

Wheel Diameter (Inches)	Tread Width (Inches)	Capacity (Lbs) (Based on normal operation)	Overall Height (Inches)	Swivel Lead (Inches)	Approx. Wt. (LBS)	Base Caster Number+
-------------------------	----------------------	--	-------------------------	----------------------	-------------------	---------------------

Polyurethane on Cast Iron (07 Roller Bearing)

PY	8	2 1/2	800	11 1/2	2 1/4	23	42PY08407
	10	2 1/2	800	13 1/2	2 1/4	19 1/2	42PY10407

Vulkollan on Iron (07 Roller Bearing)

VY	8	2 1/2	800	11 1/2	2 1/4	23	42VY08407
	10	2 1/2 <td>800</td> <td>13 1/2</td> <td>2 1/4</td> <td>21 1/4</td> <td>42VY10407</td>	800	13 1/2	2 1/4	21 1/4	42VY10407

Phenolic (07 Roller Bearing)*

TM	8	2 1/2	800	11 1/2	2 1/4	23	42TM08407
	10	2 1/2 <td>800</td> <td>13 1/2</td> <td>2 1/4</td> <td>21 1/4</td> <td>42TM10407</td>	800	13 1/2	2 1/4	21 1/4	42TM10407

*Tapered Roller (09) bearing available. To order change "07" to other bearing code. Example: 42TM08409.

Trionix™ High Impact Polymer (28 Precision Ball Bearing)

NX	8	2 1/2	800	11 1/2	2 1/4		42NX08428
	10	2 1/2 <td>800 <td>13 1/2 <td>2 1/4 <th></th> <th>42NX10428</th> </td></td></td>	800 <td>13 1/2 <td>2 1/4 <th></th> <th>42NX10428</th> </td></td>	13 1/2 <td>2 1/4 <th></th> <th>42NX10428</th> </td>	2 1/4 <th></th> <th>42NX10428</th>		42NX10428

+ For swivel models add "S", for rigid model add "R" to end of base caster number.

Wheel Diameter (Inches)	Tread Width (Inches)	Capacity (Lbs) (Based on normal operation)	Overall Height (Inches)	Swivel Lead (Inches)	Approx. Wt. (LBS)	Base Caster Number+
-------------------------	----------------------	--	-------------------------	----------------------	-------------------	---------------------

Moldon Rubber on Cast Iron (07 Roller Bearing)

MR	8	2 1/2	800	11 1/2	2 1/4	22 1/2	42MR08407
	10	2 1/2	800	13 1/2	2 1/4	26 1/2	42MR10407

Pneumatic (28 Precision Ball Bearing)

SF	8	2.80/4	295	11 1/2	2 1/4	19 3/4	42SF08528
	10 <th>4.10/4</th> <th>350</th> <th>13 1/2</th> <th>2 1/4</th> <th>21</th> <th>42SF10628</th>	4.10/4	350	13 1/2	2 1/4	21	42SF10628

Polyurethane on Cast Iron (07 Roller Bearing)*

PY 80A	8	2 1/2	800	11 1/2	2 1/4	23	42PY0840780A
	10 <th>2 1/2</th> <th>800</th> <th>13 1/2</th> <th>2 1/4</th> <th>19 1/2</th> <th>42PY1040780A</th>	2 1/2	800	13 1/2	2 1/4	19 1/2	42PY1040780A

To Specify Rigid or Swivel, insert "R" or "S" before "80A." Ex: 42PY08407R80A.

42 SERIES • CAPACITY TO 800

SPRING LOADED