



Premium Quality



Towing[^]



Environmentally Friendly

92

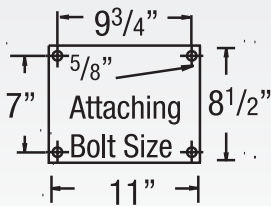
92 Heavy Duty Casters

CAPACITY TO 4800



92 Series Casters are designed specifically for power drawn trailers. These casters allow for ease of operation even on poor floor or surface conditions.

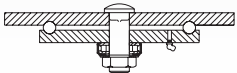
MOUNTING OPTION



TYPICAL APPLICATIONS

- Heavy duty trash dumpsters
- Trailer frames
- Automotive plants

SWIVEL CROSS SECTION



+ For swivel models add "S", for rigid model add "R" to end of base caster number.

Moldon Rubber on Cast Iron (01 Roller Bearing)

MR	Wheel Diameter (Inches)	Tread Width (Inches)	Capacity (Lbs) (Based on manual operation)	Overall Height (Inches)	Swivel Lead (Inches)	Approx. Wt. (Lbs)	Base Caster Number+
	8	3	900	11	3	48	92MR08501
	10	3	1000	12 ⁷ / ₈	3	50 ¹ / ₂	92MR10501
	10	4*	1400	12 ⁷ / ₈	3 ¹ / ₂	63 ³ / ₄	92MR10701
	12	3	1200	14 ⁷ / ₈	3 ¹ / ₂	56 ¹ / ₄	92MR12501
	12	3 ¹ / ₂ *	1500	14 ⁷ / ₈	4	63	92MR12601
	12	4*	1600	14 ⁷ / ₈	4	68 ¹ / ₂	92MR12701

*3-1/2" and 4" tread width model has solid axle, all others hollow axle.

Polyurethane on Cast Iron (01 Roller Bearing)

PY	Wheel Diameter (Inches)	Tread Width (Inches)	Capacity (Lbs) (Based on manual operation)	Overall Height (Inches)	Swivel Lead (Inches)	Approx. Wt. (Lbs)	Base Caster Number+
	8	3	2500	11	3	52 ¹ / ₂	92PY08501
	10	3	3000	12 ⁷ / ₈	3	56 ¹ / ₂	92PY10501
	10	4*	4200	12 ⁷ / ₈	3 ¹ / ₂	67 ³ / ₄	92PY10701
	12	3	3500	14 ⁷ / ₈	3 ¹ / ₂	65	92PY12501
	12	3 ¹ / ₂ *	4110	14 ⁷ / ₈	3 ¹ / ₂	68 ³ / ₄	92PY12601
	12	4*	4800	14 ⁷ / ₈	3 ¹ / ₂	71 ¹ / ₂	92PY12701

*3-1/2" and 4" tread width model has solid axle, all others hollow axle.

FEATURES

- **Top Plate and Yoke Base:** 5/8" thick 1045 AISI steel plate for superior strength
- **Swivel Raceways:** 7" diameter precision machined load raceway with 5/8" steel and tapered roller thrust bearing for easy swiveling
- **King Bolt:** 1" diameter bolt and nut heat treated for added strength
- **Legs:** 3/8" x 4" formed steel plate welded inside and out for maximum load capacity
- **Lubrication:** Zerk fitting in swivel section and wheel hub for ease of lubrication
- **Axle:** 3/4" hollow axle with recessed zerk for lubrication
- Alternate or custom caster configurations available

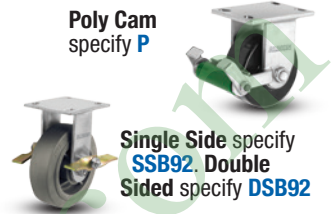
RIG OPTIONS

- **Flush King Bolt** specify **KB03**

BRAKE OPTIONS

To order, add brake code below to end of model. Example: 92PY08501SP

Poly Cam
specify **P**

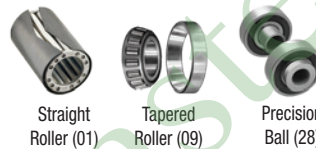


Single Side specify **SSB92**. **Double Sided** specify **DSB92**

Face Contact
specify **F**



BEARING OPTIONS



Straight Roller (01)

Tapered Roller (09)

Precision Ball (28)



Wrap Around
specify **WB92**

Welded Swivel Lock
specify **L**



Hand operated field installable **Swivel Lock** order **SL920000** separately (Yokes must be notched)

Wheel Diameter (Inches)	Tread Width (Inches)	Capacity (Lbs) (Based on manual operation)	Overall Height (Inches)	Swivel Lead (Inches)	Approx. Wt. (Lbs)	Base Caster Number+
-------------------------	----------------------	--	-------------------------	----------------------	-------------------	---------------------

+ For swivel models add "S", for rigid model add "R" to end of base caster number.

Polyurethane on Cast Iron (01 Roller Bearing)

PY 80A	Wheel Diameter (Inches)	Tread Width (Inches)	Capacity (Lbs) (Based on manual operation)	Overall Height (Inches)	Swivel Lead (Inches)	Approx. Wt. (Lbs)	Base Caster Number+
	8	3	2000	11	3	52 ¹ / ₂	92PY0850180A
	10	3	2400	12 ⁷ / ₈	3	56 ¹ / ₂	92PY1050180A
	10	4*	3350	12 ⁷ / ₈	3 ¹ / ₂	67 ³ / ₄	92PY1070180A
	12	3	2800	14 ⁷ / ₈	3 ¹ / ₂	65	92PY1250180A
	12	3 ¹ / ₂ *	3200	14 ⁷ / ₈	3 ¹ / ₂	68 ³ / ₄	92PY1260180A
	12	4*	3840	14 ⁷ / ₈	3 ¹ / ₂	71 ¹ / ₂	92PY1270180A

To Specify Rigid or Swivel, insert "R" or "S" before "80A". Example: 92PY08501R80A.

*3-1/2" and 4" tread width model has solid axle, all others hollow axle.

Vulkollan on Cast Iron (09 Tapered Roller Bearing)*

VY	Wheel Diameter (Inches)	Tread Width (Inches)	Capacity (Lbs) (Based on manual operation)	Overall Height (Inches)	Swivel Lead (Inches)	Approx. Wt. (Lbs)	Base Caster Number+
	8	3	4000	11	3	52 ¹ / ₂	92VY08509
	10	3	4800	12 ⁷ / ₈	3	56 ¹ / ₂	92VY10509
	12	3	4800	14 ⁷ / ₈	3 ¹ / ₂	65	92VY12509

* Roller (01) and Precision Ball (28) bearings available. Change "09" to other bearing code. Roller example: 92VY08501

Continue on next page >>

+ For swivel models add "S", for rigid model add "R" to end of base caster number.

Wheel Diameter (Inches)	Tread Width (Inches)	Capacity (Lbs) (Based on manual operation)	Overall Height (Inches)	Swivel Lead (Inches)	Approx. Wt. (Lbs)	Base Caster Number+

X-treme Plus Solid Polyurethane (28 Precision Ball Bearing)							
XP	8	3	2000	11	3	45	92XP08528
	10	3	2500	12 ⁷ / ₈	3	48	92XP10528



Polyurethane on Cast Iron (09 Tapered Roller Bearing)*							
PI	8	3	2500	11	2 ¹ / ₂	43 ³ / ₄	92PI08509
	10	3	3000	12 ⁷ / ₈	2 ¹ / ₂	49 ¹ / ₂	92PI10509
	12	3	3500	14 ⁷ / ₈	2 ¹ / ₂	60 ¹ / ₂	92PI12509



*Roller (01) bearings available. Change "01" to other bearing code. Example: 92PI06501.

Phenolic (01 Roller Bearing)							
TM	8	3	2500	11	3	43 ¹ / ₄	92TM08501
	10	3	2900	12 ⁷ / ₈	3	46 ¹ / ₄	92TM10501
	12	3	3500	14 ⁷ / ₈	3 ¹ / ₂	49 ³ / ₄	92TM12501
	12	3 ¹ / ₂ *	4000	14 ⁷ / ₈	3 ¹ / ₂	62	92TM12601



*3-1/2" and 4" tread width model has solid axle, all others hollow axle.

Trionix™ High Impact Polymer (28 Precision Ball Bearing)							
NX	8	3	4800	11	3	43 ¹ / ₄	92NX08528
	10	3	4800	12 ⁷ / ₈	3	46	92NX10528



Cast Iron (01 Roller Bearing)*							
CA	8	3	2800	11	3	48 ¹ / ₄	92CA08501
	10	3	2800	12 ⁷ / ₈	3	53 ¹ / ₄	92CA10501
	12	3	2800	14 ⁷ / ₈	3 ¹ / ₂	59	92CA12501
	12	3 ¹ / ₂ **	4000	14 ⁷ / ₈	3 ¹ / ₂	74	92CA12601



*Tapered Roller (09) bearings available. Change "01" to other bearing code. Example: 92CA08509.

**3-1/2" and 4" tread width model has solid axle, all others hollow axle.

+ For swivel models add "S", for rigid model add "R" to end of base caster number.

Wheel Diameter (Inches)	Tread Width (Inches)	Capacity (Lbs) (Based on manual operation)	Overall Height (Inches)	Swivel Lead (Inches)	Approx. Wt. (Lbs)	Base Caster Number+

Drop Forged Steel (01 Roller Bearing)*							
FS	8	3	4000	11	3	54 ³ / ₄	92FS08501
	10	3	4800	12 ⁷ / ₈	3	64 ¹ / ₄	92FS10501



* (09) Tapered Roller Bearings available. Change "01" to other bearing code. Example: 92FS08509.

V-grooved Cast Iron (01 Roller Bearing)							
VG	8	3	2500	11	3	53	92VG08501
	10	3	3000	12 ⁷ / ₈	3	64	92VG10501



Ductile Iron Crowned Tread (01 Roller Bearing)*							
FR	8	3	3500	11	3	49	92FR08501
	10	3	3500	12 ⁷ / ₈	3	55	92FR10501



*Tapered Roller (09) bearing available. Change "01" to other bearing code. Example: 92FR08509.

Ductile Iron Flat Tread (01 Roller Bearing)*							
FM	8	3	3500	11	3	49	92FM08501
	10	3	3500	12 ⁷ / ₈	3	55	92FM10501



*Tapered Roller (09) bearing available. Change "01" to other bearing code. Example: 92FM08509.

Ductile Iron V-Groove Tread (01 Roller Bearing)*							
VM	8	3	3500	11	3	49	92VM08501
	10	3	3500	12 ⁷ / ₈	3	55	92VM10501



*Tapered Roller (09) bearing available. Change "01" to other bearing code. Example: 92VM08509.

CUSTOM FABRICATION

This is not a one-size-fits-all business. In fact, many of our orders require custom fabrication.

If you can't find the right caster for your special application, put the Albion engineering team to work. We will create the perfect solution for your moving problem.



See pages 16-17