



Premium Quality



Towing[^]



Environmentally Friendly

93

93 Heavy Duty Casters

CAPACITY TO 7500

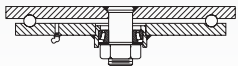


This caster is constructed from 5/8" thick AISI 1045 steel for those rugged applications. Design accommodates wider wheels for ease of use.

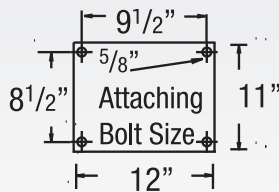
TYPICAL APPLICATIONS

- Die carts
- Towed trailers
- Workstation
- Aircraft assembly

SWIVEL CROSS SECTION



MOUNTING OPTION



FEATURES

- **Top Plate and Yoke Base:** 5/8" thick 1045 AISI steel plate for superior strength
- **Swivel Raceways:** 7" diameter precision machined load raceway with 5/8" steel balls and a tapered roller thrust bearing for easy swiveling
- **King Bolt:** 1-1/4" diameter bolt and nut heat treated for added strength
- **Legs:** 1/2" formed steel plate welded inside and out for maximum load capacity
- **Lubrication:** Zerk fitting in swivel section and wheel hub for ease of lubrication
- **Axle:** 1-1/4" solid axle
- Alternate or custom caster configurations available

BRAKE OPTIONS

To order, add brake code below to end of model. Example: 93PY12609SP

Poly Cam
specify **P**



Face Contact
specify **F**

Welded Swivel Lock
specify **L**



BEARING OPTIONS



Straight Roller (01)



Tapered Roller (09)

+ For swivel models add "S", for rigid model add "R" to end of base caster number.

Vulkollan on Cast Iron (09 Tapered Roller Bearing)

Wheel Diameter (Inches)	Tread Width (Inches)	Capacity (Lbs) (Roller for manual operation)	Overall Height (Inches)	Swivel Lead (Inches)	Approx. Wt. (Lbs)	Base Caster Number+
12	3 1/2	5300	15 3/4	4 1/2	93 1/2	93VY12609
12	4	6925	15 3/4	4 1/2	96	93VY12709

Phenolic (09 Tapered Roller Bearing)

Wheel Diameter (Inches)	Tread Width (Inches)	Capacity (Lbs) (Roller for manual operation)	Overall Height (Inches)	Swivel Lead (Inches)	Approx. Wt. (Lbs)	Base Caster Number+
12	3 1/2	4000	15 3/4	4 1/2	79 1/2	93TM12609
16	3	4000	19	4 1/2	89	93TM16509
16	4	7500	19	4 1/2	100	93TM16709

Laminated Phenolic (09 Tapered Roller Bearing)

Wheel Diameter (Inches)	Tread Width (Inches)	Capacity (Lbs) (Roller for manual operation)	Overall Height (Inches)	Swivel Lead (Inches)	Approx. Wt. (Lbs)	Base Caster Number+
12	3 1/2	4000	15 3/4	4 1/2	86 1/2	93TL12609
16	3	4000	19	4 1/2	88 3/4	93TL16509
16	4	7500	19	4 1/2	99 1/2	93TL16709

Cast Iron (09 Tapered Roller Bearing)

Wheel Diameter (Inches)	Tread Width (Inches)	Capacity (Lbs) (Roller for manual operation)	Overall Height (Inches)	Swivel Lead (Inches)	Approx. Wt. (Lbs)	Base Caster Number+
12	3 1/2	4000	15 3/4	4 1/2	98 1/2	93CA12609
16	4	5300	19	4 1/2	129 3/4	93CA16709

Ductile Iron (01 Roller Bearing)

Wheel Diameter (Inches)	Tread Width (Inches)	Capacity (Lbs) (Roller for manual operation)	Overall Height (Inches)	Swivel Lead (Inches)	Approx. Wt. (Lbs)	Base Caster Number+
12	3 1/2	6000	15 3/4	4 1/2	103 1/2	93FM12601

+ For swivel models add "S", for rigid model add "R" to end of base caster number.

Moldon Rubber on Cast Iron (09 Tapered Roller Bearing)

Wheel Diameter (Inches)	Tread Width (Inches)	Capacity (Lbs) (Roller for manual operation)	Overall Height (Inches)	Swivel Lead (Inches)	Approx. Wt. (Lbs)	Base Caster Number+
12	4	1600	15 3/4	4 1/2	92 1/2	93MR12709
16	4	2000	19	4 1/2	111 3/4	93MR16709
16	5	2570	19	4 1/2	125	93MR16809
18	5	2800	21	4 1/2	149	93MR18809

Polyurethane on Cast Iron (09 Tapered Roller Bearing)

Wheel Diameter (Inches)	Tread Width (Inches)	Capacity (Lbs) (Roller for manual operation)	Overall Height (Inches)	Swivel Lead (Inches)	Approx. Wt. (Lbs)	Base Caster Number+
12	3 1/2	4110	15 3/4	4 1/2	93 1/2	93PY12609
12	4	4800	15 3/4	4 1/2	96	93PY12709
16	3	4260	19	4 1/2	116 3/4	93PY16509
16	4	5970	19	4 1/2	131 1/4	93PY16709
16	5	7500	19	4 1/2	145 3/4	93PY16809
18	5	7500	21	4 1/2	152	93PY18809

Thick Tread Polyurethane (09 Tapered Roller Bearing)

Wheel Diameter (Inches)	Tread Width (Inches)	Capacity (Lbs) (Roller for manual operation)	Overall Height (Inches)	Swivel Lead (Inches)	Approx. Wt. (Lbs)	Base Caster Number+
12	4	5280	15 3/4	4 1/2	100	93PX12709
16	3	4680	19	4 1/2	119	93PX16509
16	4	6570	19	4 1/2	134	93PX16709
16	5	7500	19	4 1/2	149	93PX16809