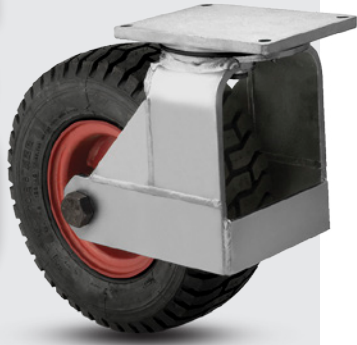


Pneumatic Casters
CAPACITY TO 3630

94
95



FEATURES

- **Swivel Casters:** Hardened double ball bearing raceway with 1-1/4" tapered roller thrust bearing
- **Shock Absorbing:** Cushion wheel protects equipment
- **Pressure Lubrication** to all bearings

RIG OPTIONS

- **Swivel lock** specify L
- **Face contact brake** specify F
- **Sealed swivel** specify NS
- Foam fill available, consult factory

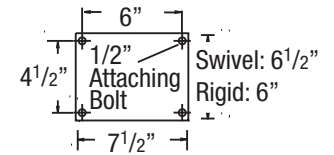
BEARING OPTIONS



+ For swivel models add "S", for rigid model add "R" to end of base caster number.

94

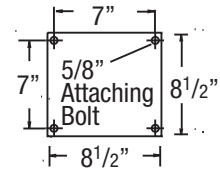
| Wheel Diameter (Inches) | Tread Width/Type (Inches) | Capacity (Lbs) (Based on normal operation) | Overall Height (Inches) | Swivel Lead (Inches) | Approx. Wt. (Lbs) | Base Caster Number+ Tapered Roller Bearing (09) |
|---------------------------------|---------------------------|---|-------------------------|----------------------|-------------------|---|
| 94 Series Semi-Pneumatic | | | | | | |
| 16 | 4.80/8 | 1300 | 19 1/8 | 4 | 44 1/4 | 94SF16809SBBL |
| 18 | 5.70/8 | 1590 | 21 1/2 | 4 1/2 | 54 3/4 | 94SF18909SBBL |



These casters and wheels are deluxe models. Use them for very heavy duty service. They will handle any job that is practical to mount on pneumatics. The tires are mounted on wide base rims. This permits more air volume, more load capacity, stability and cushioning. Wheel bearings are tapered with dust seals. **Note:** model ordered may look different than photo above.

95

| Wheel Diameter (Inches) | Tread Width/Type (Inches) | Capacity (Lbs) (Based on normal operation) | Overall Height (Inches) | Swivel Lead (Inches) | Approx. Wt. (Lbs) | Base Caster Number+ Tapered Roller Bearing (09) |
|---------------------------------|---------------------------|---|-------------------------|----------------------|-------------------|---|
| 95 Series Semi-Pneumatic | | | | | | |
| 21 | 6.90/9 | 2420 | 24 1/4 | 5 | 84 1/4 | 95SF21909SBBL |
| 23 | 6.50/10 | 2775 | 26 1/4 | 5 | 87 1/4 | 95SF23909SBBL |
| 25 | 7.50/10 | 3630 | 28 3/4 | 5 | 90 1/2 | 95SF25909SBBL |



CUSTOM FABRICATION

This is not a one-size-fits-all business. In fact, many of our orders require custom fabrication.

If you can't find the right caster for your special application, put the Albion engineering team to work. We will create the perfect solution for your moving problem.



See pages 16-17