



Premium Quality



Environmentally Friendly

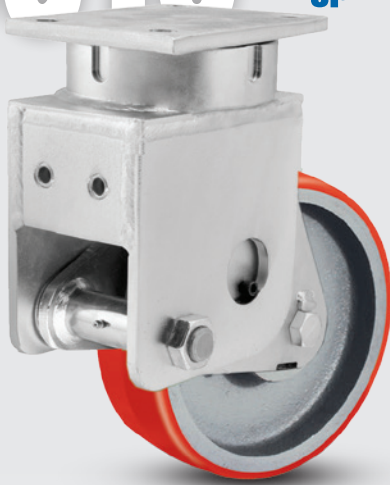


Towing^

S610

Contender Spring Loaded Kingpinless Casters

CAPACITY TO 3000

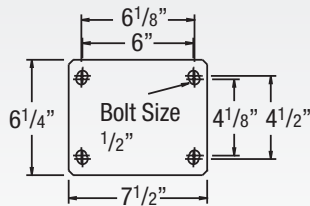


Highly recommended for automotive and aerospace applications. This caster is built to take the punishment of constant swiveling or for service where shock or impact loads might damage less rugged casters.

Greater capacity and better shock protection. Noise levels are reduced through the dampening effect of these casters.

Capacities listed at 50% of wheel deflection (21/32"). Total wheel deflection is 1-5/16".

MOUNTING OPTION



SWIVEL CROSS SECTION



TYPICAL APPLICATIONS

- Body dolly carts
- Engine dollies
- Material carts
- Chassis rack carts
- Paint line dollies
- Towed trash gondolas
- Aviation Ground Support
- Aircraft Tripod Jacks
- Shock Sensitive Loads

FEATURES

- **Load Springs:** Protect from damaging shocks and reduce noise levels through the dampening effect of the springs
- **Top Plate:** 1/2" AISI 1045 heat treated steel welded inside and out for longer life
- **Swivel Section:** 3/4" ball bearings mounted in a 4-3/8" precision machined raceway. Zerk in swivel section
- **Yoke Base:** Notched AISI 1045 heat treated steel
- **Legs:** 3/8" thick steel welded to yoke base using 100,000 psi weld filler
- **Axle:** 2-1/2" and 3" tread width wheels feature a 3/4" axle, 3-1/2" and 4" tread width wheels feature a 1" axle
- Alternate or custom caster configurations available

RIG OPTIONS

- For non-spring loaded versions, see 610 Series on pages 52-53
- S410 optional plates also available; consult factory

BRAKE OPTIONS

Consult factory

+ For swivel models add "S", for rigid model add "R" to end of base caster number.

Wheel Diameter (Inches)	Tread Width (Inches)	Capacity (Lbs) (Rate for manual operation)	Overall Height (Inches)	Swivel Lead (Inches)	Base Caster Number+
-------------------------	----------------------	--	-------------------------	----------------------	---------------------

Mold-on Polyurethane on Aluminum (01 Roller Bearing)*

PD	8	2 1/2	2010	1 3/4	4 1/2	S610PD08401
	8	3	2520	1 3/4	4 1/2	S610PD08501
	10	2 1/2	2370	1 7/8	4 1/2	S610PD10401
	10	3	2000	1 7/8	4 1/2	S610PD10501

Standard durometer 60 Shore D. Other durometers available.

*Tapered Roller (09) bearings available.

To order change "01" to "09". Example: S610PD10409.

Polyurethane on Cast Iron (09 Tapered Roller Bearing)*

PY	6	2 1/2	1600	1 3/4	4 1/2	S610PY06409
	6	3	2000	1 3/4	4 1/2	S610PY06509
	8	2 1/2	2000	1 3/4	4 1/2	S610PY08409
	8	3	2500	1 3/4	4 1/2	S610PY08509
	10	2 1/2	2300	1 7/8	4 1/2	S610PY10409
	10	3	3000	1 7/8	4 1/2	S610PY10509
95 Shore A	12	2 1/2	2700	1 6/8	5 5/16	S610PY12409
	12	3	3000	1 6/8	5 5/16	S610PY12509

*Roller (01) bearings available.

To order change "09" to "01". Example: S610PY10401. 80A Durometer available, add "80A" to end of caster number.

80A capacity reduced by approximately 20%.

Swivel example: S610PY06409S80A.

For 70D consult factory.

Thick Tread Polyurethane (09 Tapered Roller Bearing)*

PX	6	3	2250	1 3/4	4 1/2	S610PX06509
	8	3	2780	1 3/4	4 1/2	S610PX08509
	10	2 1/2	2600	1 7/8	4 1/2	S610PX10409
	10	3	3000	1 7/8	4 1/2	S610PX10509
	12	3	3000	1 6/8	5 5/16	S610PX12509

Standard durometer 95 Shore A. Other durometers available.

*Roller (01) bearings available. To order change "09" to "01".

Example: S610PX10401.

+ For swivel models add "S", for rigid model add "R" to end of base caster number.

Wheel Diameter (Inches)	Tread Width (Inches)	Capacity (Lbs) (Rate for manual operation)	Overall Height (Inches)	Swivel Lead (Inches)	Base Caster Number+
-------------------------	----------------------	--	-------------------------	----------------------	---------------------

Moldon Rubber on Cast Iron (09 Tapered Roller Bearing)*

MR/MH	6	2 1/2	700	1 1/4	4 1/2	S610MR06409
	6	3	750	1 1/4	4 1/2	S610MR06509
	8	2 1/2	850	1 3/4	4 1/2	S610MR08409
	8	3	900	1 3/4	4 1/2	S610MR08509
	10	2 1/2	950	1 7/8	4 1/2	S610MR10409
	10	2 1/2**	1500	1 7/8	4 1/2	S610MH10409
	10	3	1000	1 7/8	4 1/2	S610MR10509
	10	3**	1800	1 7/8	4 1/2	S610MH10509
	12	2 1/2	950	1 6/8	5 5/16	S610MR12409
	12	2 1/2**	1700	1 6/8	5 5/16	S610MH12409
	12	3	1200	1 6/8	5 5/16	S610MR12509

*Roller (01) bearings available. To order change "09" to "01".

Example: S610MR10401.

**Heavy-duty MH version of wheel.

Continue on next page >>

