

MG

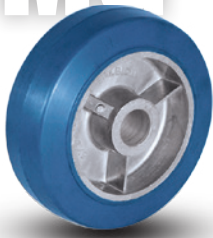


Premium Quality



Ergonomic

Neoprene on Aluminum



The MG wheel has a neoprene tread that is impervious to metal chips and screws, and has an extremely high chemical resistance. This wheel will perform well in contact with oils and chemicals; it can be used over a wide temperature range. The MG wheel is tough and is designed to handle heavy loads.

FEATURES

- **Wheel face:** Moderate crown
- **Finish:** Blue on aluminum core
- **Temperature Range:** -22°F to +220°F
- **Hardness:** 80 Shore A

WHEEL OPTIONS

- Note: Select bearings featured are recommended for standard applications. For special applications or alternate bearings consult factory. See bearing information on page 13
- For customization & special application options, please consult factory

Wheel Diameter (Inches)	Tread Width (Inches)	Capacity (Lbs) (Rated for manual operation)	Hub Length (Inches)	Bore ID (Inches)	Bearing ID (Inches)	Approx. Wt. (Lbs)	Wheel Number Roller Bearing (01)	Wheel Number Plain Bore (00)
Crowned Tread Neoprene on Aluminum (MG)								
4	2	500	2-3/16	1-3/16				MG0420019
4	2	500	2-3/16		1/2		MG0420108	
5	2	600	2-3/16	1-3/16				MG0520019
5	2	600	2-3/16		3/4		MG0520112	
6	2	700	2-3/16	1-3/16				MG0620019
6	2	700	2-3/16		3/4		MG0620112	
8	2	700	2-3/16	1-3/16				MG0820019
8	2	700	2-3/16		3/4		MG0820112	

NP



Premium Quality



Ergonomic



Maintenance Free

Neoprene on Aluminum



The NP wheel has very high resilience, is impervious to metal chips and screws, and has an extremely high chemical resistance. This wheel will perform well in contact with oils and chemicals, and can be used over a wide temperature range. The NP wheel is tough, and is designed to handle heavy loads.

FEATURES

- **Wheel face:** Full Radius
- **Finish:** Blue on aluminum core
- **Temperature Range:** -22°F to +220°F
- **Hardness:** 60-70 Shore A

WHEEL OPTIONS

- Note: Select bearings featured are recommended for standard applications. For special applications or alternate bearings consult factory. See bearing information on page 13
- For customization & special application options, please consult factory

Wheel Diameter (Inches)	Tread Width (Inches)	Capacity (Lbs) (Rated for manual operation)	Hub Length (Inches)	Bore ID (Inches)	Bearing ID (Inches)	Approx. Wt. (Lbs)	Wheel Number Precision Bearing (28)
Round Tread Neoprene on Aluminum (NP)							
5	2	600	2-7/16		1/2		NP0522808
6	2	700	2-7/16		1/2		NP0622808
8	2	700	2-7/16		1/2		NP0822808