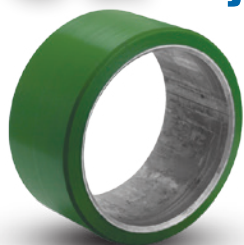


OG



Premium Quality

**Polyurethane Press-On Tires**



Polyurethane tires reduce operating cost because the high wear resistance of this material minimizes replacement. Polyurethane offers easier rollability, higher wear resistance, and greater capacity than rubber. Use press-on polyurethane as an alternative to standard mold-on polyurethane when greater cushioning or speed is involved. These wheels are also the perfect replacement wheel for many forklift brands.

**FEATURES**

- **Load Capacity:** 1.54 times greater than rubber
- Chunk and cut resistance
- Abrasion resistance
- Energy conservative design
- **Wheel Face:** as specified
- **Finish:** Green polyurethane or steel band
- **Temperature Range:** -40°F to +180°F
- **Hardness:** 95 Shore A

**WHEEL OPTIONS**

- Note: Select bearings featured are recommended for standard applications. For special applications or alternate bearings consult factory. See bearing information on page 13
- For customization & special application options, please consult factory



Flat tread



Speed groove



Crowned tread

- Heavy Duty
- High Wear Resistance

OD x Width x ID (Inches)	Tire Number	Tread Style	Capacity (6 mph) (lbs)	Capacity (10 mph) (lbs)	Approx. Wt. (lbs)
<b>Polyurethane Press-On Tires (OG)</b>					
8-1/2 x 4 x 4	OG0870016	Flat	2200	1940	12
8-1/2 x 4 x 4	OG087001601	Crown	2200	1940	12
9 x 5 x 5	OG0980020	Flat	3020	2680	16
9 x 5 x 5	OG098002001	Crown	3020	2680	16
9 x 5 x 5	OG098002002	Groove	3020	2680	16
10 x 3 x 6-1/4	OG1050025	Flat	1690	1490	10
10 x 3 x 6-1/4	OG105002501	Crown	1690	1490	10
10 x 4 x 5	OG1070020	Flat	2480	2190	18
10 x 4 x 5	OG107002001	Crown	2480	2190	18
10 x 4 x 6-1/4	OG1070025	Flat	2460	2190	14
10 x 4 x 6-1/4	OG107002501	Crown	2460	2190	14
10 x 4 x 6-1/2	OG1070026	Flat	2490	2190	14
10 x 4 x 6-1/2	OG107002601	Crown	2490	2190	14
10 x 5 x 5	OG1080020	Flat	3210	2870	15
10 x 5 x 5	OG108002001	Crown	3210	2870	15
10 x 5 x 5	OG108002002	Groove	3210	2870	15
10 x 5 x 6-1/4	OG1080025	Flat	3270	2890	16
10 x 5 x 6-1/4	OG108002501	Crown	3270	2890	16
10 x 5 x 6-1/4	OG108002502	Groove	3270	2890	16
10 x 5 x 6-1/2	OG1080026	Flat	3190	2830	19
10 x 5 x 6-1/2	OG108002601	Crown	3190	2830	19
10 x 5 x 6-1/2	OG108002602	Groove	3190	2830	19
10 x 6 x 6-1/4	OG1090025	Flat	3960	3540	22
10 x 6 x 6-1/4	OG109002501	Crown	3960	3540	22
10 x 6 x 6-1/4	OG109002502	Groove	3960	3540	22
10 x 6 x 6-1/2	OG1090026	Flat	3940	3520	22
10 x 6 x 6-1/2	OG109002601	Crown	3940	3520	22
10 x 6 x 6-1/2	OG109002602	Groove	3940	3520	22
10 x 7 x 6-1/4	OG109002503	Flat	4770	4240	26
10 x 7 x 6-1/4	OG109002504	Groove	4770	4240	26
10 x 7 x 6-1/2	OG109002603	Flat	4750	4290	26
10 x 7 x 6-1/2	OG109002604	Groove	4750	4290	26
10 x 3 x 8	OG1050032	Flat	2000	1850	15
10-1/2 x 3 x 8	OG105003201	Groove	2000	1850	15
10-1/2 x 4 x 5	OG107002002	Flat	2170	1940	19
10-1/2 x 4 x 5	OG107002003	Crown	2170	1940	19
10-1/2 x 4 x 6-1/2	OG107002602	Flat	2130	2260	15
10-1/2 x 4 x 6-1/2	OG107002603	Crown	2130	2260	15
10-1/2 x 4-1/2 x 8	OG107003202	Flat	2820	2500	18
10-1/2 x 4-1/2 x 8	OG107003203	Crown	2820	2500	18
10-1/2 x 5 x 5	OG108002003	Flat	3470	3060	19
10-1/2 x 5 x 5	OG108002004	Crown	3470	3060	19
10-1/2 x 5 x 5	OG108002005	Groove	3470	3060	19
10-1/2 x 5 x 6-1/4	OG108002503	Flat	3330	2970	20
10-1/2 x 5 x 6-1/4	OG108002504	Crown	3330	2970	20
10-1/2 x 5 x 6-1/4	OG108002505	Groove	3330	2970	20
10-1/2 x 5 x 6-1/2	OG108002603	Flat	3380	2990	20
10-1/2 x 5 x 6-1/2	OG108002604	Crown	3380	2990	20
10-1/2 x 5 x 6-1/2	OG108002605	Groove	3380	2990	20

Continue on next page >>

POLYURETHANE PRESS-ON • UP TO 4770

OD x Width x ID (Inches)	Tire Number	Tread Style	Capacity (6 mph) (lbs)	Capacity (10 mph) (lbs)	Approx. Wt. (lbs)
<b>Polyurethane Press-On Tires (OG)</b>					
10-1/2 x 6 x 5	<b>OG1090020</b>	Flat	4400	3900	24
10-1/2 x 6 x 5	<b>OG109002001</b>	Crown	4400	3900	24
10-1/2 x 6 x 5	<b>OG109002002</b>	Groove	4400	3900	24
10-1/2 x 6 x 6-1/4	<b>OG109002505</b>	Flat	4330	3870	23
10-1/2 x 6 x 6-1/4	<b>OG109002506</b>	Crown	4330	3870	23
10-1/2 x 6 x 6-1/4	<b>OG109002507</b>	Groove	4330	3870	23
10-1/2 x 6 x 6-1/2	<b>OG109002605</b>	Flat	4310	3850	23
10-1/2 x 6 x 6-1/2	<b>OG109002606</b>	Crown	4310	3850	23
10-1/2 x 6 x 6-1/2	<b>OG109002607</b>	Groove	4310	3850	23
10-1/2 x 7 x 6-1/2	<b>OG109002608</b>	Flat	5040	4450	27
10-1/2 x 7 x 6-1/2	<b>OG109002609</b>	Groove	5040	4450	27
10-1/2 x 8 x 6-1/2	<b>OG109002610</b>	Flat	5690	5080	31
10-1/2 x 8 x 6-1/2	<b>OG109002611</b>	Groove	5690	5080	31
12 x 3-1/2 x 8	<b>OG1260032</b>	Flat	2390	2110	11
12 x 3-1/2 x 8	<b>OG126003201</b>	Crown	2390	2110	11
12 x 4 x 8	<b>OG1270032</b>	Flat	2840	2510	13
12 x 4 x 8	<b>OG127003201</b>	Crown	2840	2510	13
12 x 4-1/2 x 8	<b>OG127003202</b>	Flat	3300	2910	15
12 x 4-1/2 x 8	<b>OG127003203</b>	Crown	3300	2910	15
12 x 5 x 8	<b>OG1280032</b>	Flat	3770	3300	17
12 x 5 x 8	<b>OG128003201</b>	Crown	3770	3300	17
12 x 5 x 8	<b>OG128003202</b>	Groove	3770	3300	17
12 x 5-1/2 x 8	<b>OG12900320</b>	Flat	4080	3710	19
12 x 5-1/2 x 8	<b>OG129003201</b>	Crown	4080	3710	19
12 x 5-1/2 x 8	<b>OG129003202</b>	Groove	4080	3710	19
12 x 6 x 8	<b>OG129003203</b>	Flat	4520	4110	21
12 x 6 x 8	<b>OG129003204</b>	Crown	4520	4110	21
12 x 6 x 8	<b>OG129003205</b>	Groove	4520	4110	21
12 x 6-1/2 x 8	<b>OG129003206</b>	Flat	4960	4510	23
12 x 6-1/2 x 8	<b>OG129003207</b>	Groove	4960	4510	23
12 x 7 x 8	<b>OG129003208</b>	Flat	5300	4900	25
12 x 7 x 8	<b>OG129003209</b>	Groove	5300	4900	25
13 x 3-1/2 x 8	<b>OG1360032</b>	Flat	2480	2200	20
13 x 3-1/2 x 8	<b>OG136003201</b>	Crown	2480	2200	20
13 x 4-1/2 x 8	<b>OG1370032</b>	Flat	3540	3130	27
13 x 4-1/2 x 8	<b>OG137003201</b>	Crown	3540	3130	27
13 x 5-1/2 x 8	<b>OG1390032</b>	Flat	3600	3240	33
13 x 5-1/2 x 8	<b>OG139003201</b>	Crown	3600	3240	33
13 x 5-1/2 x 8	<b>OG139003202</b>	Groove	3600	3240	33
13-1/2 x 4-1/2 x 8	<b>OG137003202</b>	Flat	3620	3200	28
13-1/2 x 4-1/2 x 8	<b>OG137003203</b>	Crown	3620	3200	28
13-1/2 x 5-1/2 x 8	<b>OG138003203</b>	Flat	4740	4200	34
13-1/2 x 5-1/2 x 8	<b>OG138003204</b>	Crown	4740	4200	34
13-1/2 x 5-1/2 x 8	<b>OG138003205</b>	Groove	4740	4200	34
14 x 4-1/2 x 8	<b>OG1470032</b>	Flat	3680	3260	31
14 x 4-1/2 x 8	<b>OG147003201</b>	Crown	3680	3260	31
15 x 5 x 11-1/4	<b>OG1580045</b>	Flat	4390	3880	33
15 x 5 x 11-1/4	<b>OG158004501</b>	Crown	4390	3880	33
15 x 5 x 11-1/4	<b>OG158004502</b>	Groove	4390	3880	33

OD x Width x ID (Inches)	Tire Number	Tread Style	Capacity (6 mph) (lbs)	Capacity (10 mph) (lbs)	Approx. Wt. (lbs)
<b>Polyurethane Press-On Tires (OG)</b>					
15 x 6 x 11-1/4	<b>OG1590045</b>	Flat	5440	4800	40
15 x 6 x 11-1/4	<b>OG159004501</b>	Crown	5440	4800	40
15 x 6 x 11-1/4	<b>OG159004502</b>	Groove	5440	4800	40
15 x 7 x 11-1/4	<b>OG159004503</b>	Flat	6480	5730	47
15 x 7 x 11-1/4	<b>OG159004504</b>	Groove	6480	5730	47
15 x 8 x 11-1/4	<b>OG159004505</b>	Flat	7530	6650	53
15 x 8 x 11-1/4	<b>OG159004506</b>	Groove	7530	6650	53
15 x 9 x 11-1/4	<b>OG159004507</b>	Flat	8700	7700	60
15 x 9 x 11-1/4	<b>OG159004508</b>	Groove	8700	7700	60
15-1/2 x 5 x 10	<b>OG1580040</b>	Flat	4640	4110	39
15-1/2 x 5 x 10	<b>OG158004001</b>	Crown	4640	4110	39
15-1/2 x 5 x 10	<b>OG158004002</b>	Groove	4640	4110	39
15-1/2 x 6 x 10	<b>OG1590040</b>	Flat	5880	5210	46
15-1/2 x 6 x 10	<b>OG159004001</b>	Crown	5880	5210	46
15-1/2 x 6 x 10	<b>OG159004002</b>	Groove	5880	5210	46
16 x 5 x 10-1/2	<b>OG1680042</b>	Flat	4760	4200	40
16 x 5 x 10-1/2	<b>OG168004201</b>	Crown	4760	4200	40
16 x 5 x 10-1/2	<b>OG168004202</b>	Groove	4760	4200	40
16 x 6 x 10-1/2	<b>OG1690042</b>	Flat	6040	5330	48
16 x 6 x 10-1/2	<b>OG169004201</b>	Crown	6040	5330	48
16 x 6 x 10-1/2	<b>OG169004204</b>	Groove	6040	5330	48
16 x 7 x 10-1/2	<b>OG169004203</b>	Flat	7320	6470	57
16 x 7 x 10-1/2	<b>OG169004204</b>	Groove	7320	6470	57
16-1/4 x 4 x 11-1/4	<b>OG1670045</b>	Flat	3560	3140	32
16-1/4 x 4 x 11-1/4	<b>OG167004501</b>	Crown	3560	3140	32
16-1/4 x 5 x 11-1/4	<b>OG1680045</b>	Flat	4800	4250	40
16-1/4 x 5 x 11-1/4	<b>OG168004501</b>	Crown	4800	4250	40
16-1/4 x 5 x 11-1/4	<b>OG168004502</b>	Groove	4800	4250	40
16-1/4 x 6 x 11-1/4	<b>OG1690045</b>	Flat	6050	5360	48
16-1/4 x 6 x 11-1/4	<b>OG169004501</b>	Crown	6050	5360	48
16-1/4 x 6 x 11-1/4	<b>OG169004502</b>	Groove	6050	5360	48
16-1/4 x 7 x 11-1/4	<b>OG169004503</b>	Flat	7300	6450	56
16-1/4 x 7 x 11-1/4	<b>OG169004504</b>	Groove	7300	6450	56
18 x 5 x 12-1/8	<b>OG1880049</b>	Flat	5170	4590	43
18 x 5 x 12-1/8	<b>OG188004901</b>	Crown	5170	4590	43
18 x 6 x 12-1/8	<b>OG1890049</b>	Flat	6610	5850	52
18 x 6 x 12-1/8	<b>OG189004901</b>	Crown	6610	5850	52
18 x 7 x 12-1/8	<b>OG189004902</b>	Flat	8040	7110	63
18 x 7 x 12-1/8	<b>OG189004903</b>	Groove	8040	7110	63
18 x 8 x 12-1/8	<b>OG189004904</b>	Flat	9470	8380	71
18 x 8 x 12-1/8	<b>OG189004905</b>	Groove	9470	8380	71
18 x 9 x 12-1/8	<b>OG189004906</b>	Flat	10900	9660	82
18 x 9 x 12-1/8	<b>OG189004907</b>	Groove	10900	9660	82
18 x 4 x 14	<b>OG1870056</b>	Flat	3850	3400	32
18 x 4 x 14	<b>OG187005601</b>	Crown	3850	3400	32
18 x 5 x 14	<b>OG1880056</b>	Flat	5070	4480	40
18 x 5 x 14	<b>OG188005601</b>	Crown	5070	4480	40
18 x 7 x 14	<b>OG1890056</b>	Flat	7530	6650	58
18 x 7 x 14	<b>OG189005601</b>	Groove	7530	6650	58

**OG** Premium Quality  
**Press-On Mini Polyurethane**



Polyurethane tires will reduce operating cost because the high wear resistance of this material minimizes replacement. Polyurethane offers easier rollability, higher wear resistance, and greater capacity than rubber. Use press-on polyurethane as an alternative to standard mold-on polyurethane when greater cushioning or speed is involved.

**FEATURES**

- **Wheel Face:** Flat
- **Finish:** Green tread on grey hub
- **Temperature Range:** -40°F to +180°F
- **Hardness:** 95 Shore A

**WHEEL OPTIONS**

- Note: Select bearings featured are recommended for standard applications. For special applications or alternate bearings consult factory. See bearing information on page 13
- For customization & special application options, please consult factory

Wheel Diameter (Inches)	Tread Width (Inches)	Tire ID, Core OD (Inches)	Capacity (Lbs) <small>(Ride for manual operation)</small>	Hub Length (Inches)	Bore ID (Inches)	Bearing ID (Inches)	Approx. Wt. (Lbs)	Wheel Number Roller Bearing (O1)	Wheel Number Over Spacers (O9)
<b>Press-on Mini Polyurethane (OG)</b>									
5	4	3	2240	4-1/4	1-15/16	1-1/4	10	OG057012001	
5	4	3	2240	4-1/2	2	1	10		OG057091601
5	5	3	2800	5-1/4	1-15/16	1-1/4	13	OG058012001	
5	5	3	2800	5-1/2	2	1	13		OG058091601
6	4	4	2990	4-1/4	1-15/16	1-1/4	18-1/2	OG067012001	
6	4	4	2990	4-1/2	2	1	18-1/2		OG067091601
6	5	4	3700	4-1/4	1-15/16	1-1/4	20	OG068012001	
6	5	4	3700	5-1/2	2	1	20		OG068091601
6	6	4	4400	6-1/2	2	1	23		OG069091601
7	4	5	3040	4-1/2	2	1	22		OG077091601
7	5	5	3800	5-1/2	2	1	27-1/2		OG078091601
7	6	5	4550	6-1/2	2-7/16	1-1/4	33		OG079092001
8	3	6	2640	3-1/2	1-15/16	3/4	18		OG085091201
8	4	6	3670	4-1/2	2	1	20		OG087091601
8	5	6	4590	5-1/2	2-7/16	1-1/4	25		OG088092001
8	6	6	5500	6-1/2	2-7/16	1-1/4	36		OG089092001
10	3	8	3000	3-1/2	1-15/16	3/4	26		OG105091201
10	4	8	4000	4-1/2	2-7/16	1	31		OG107091601
10	5	8	5000	5-1/2	2	1	41		OG108091601
10	6	8	6000	6-1/2	2-7/16	1-1/4	64		OG109092001
10-1/2	3	8	3300	3-1/2	1-15/16	3/4	27		OG105091202
10-1/2	4	8	4400	4-1/2	2-7/16	1	32-1/2		OG107091602
10-1/2	5	8	5500	5-1/2	2-11/32	1-1/4	43		OG108092001
10-1/2	6	8	6600	6-1/2	2-7/16	1-1/4	66		OG109092002

**XV** Premium Quality  
**Polyurethane V-Groove**



Made in the USA

Wheel face and "V"-groove are machined from heavy duty polyurethane. A relief groove at the base of the "V" tends to equalize the load to each face of the angle track when in operation. Wheel face and bore are machined for concentricity to proper tracking. These wheels can be used not only on track but flat surfaces as well.

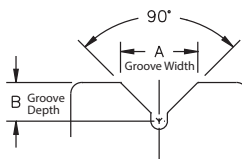
**FEATURES**

- **Wheel Face:** V-groove
- **Finish:** Green
- **Temperature Range:** -40°F to +180°F
- **Hardness:** 60 Shore D

**WHEEL OPTIONS**

- Note: Select bearings featured are recommended for standard applications. For special applications or alternate bearings consult factory. See bearing information on page 11
- For customization & special application options, please consult factory

Wheel Diameter (Inches)	Tread Width (Inches)	Capacity (Lbs) <small>(Ride for manual operation)</small>	Hub Length (Inches)	Bore ID (Inches)	Bearing ID (Inches)	Groove Width "A" (Inches)	Groove Depth "B" (Inches)	Approx. Wt. (Lbs)	Wheel Number Roller Bearing (O2)
<b>Polyurethane V-Groove (XV)</b>									
4	2	300	2-3/16	1-3/16	3/4	7/8	7/16	1	XV0420212
5	2	300	2-3/16	1-3/16	3/4	7/8	7/16	1-1/2	XV0520212
6	2	300	2-3/16	1-3/16	3/4	7/8	7/16	1-3/4	XV0620212
8	2	300	2-3/16	1-3/16	3/4	7/8	7/16	2-3/4	XV0820212



Letters match to chart descriptions

Please note: Track alignment is critical when utilizing v-groove wheels.

POLYURETHANE PRESS-ON & V-GROOVE • UP TO 6500