



Thick Tread Polyurethane on Cast Iron Core



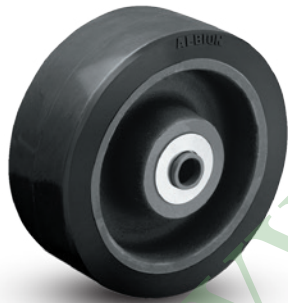
PX wheels are composed of a polyurethane elastomer, open cast on clean, precision tolerance cores. Polyurethane tread is chemically bonded to a cast iron core. High capacity polyurethane protects floors, is non-marking and delivers quieter operation than standard metal wheels.

FEATURES

- **Thickness:** 1" thick polyurethane tread
- **Wheel Face:** Available in flat or 3° crown
- **Hardness:** 95 Shore A
- **Finish:** Green tread on black core
- **Temperature Range:** -40°F to +180°F

WHEEL OPTIONS

- **80 Shore A** durometer option available (20% capacity reduction). Provides more debris resistance. Red-orange on black core
- **70 Shore D** durometer option available (20% capacity increase). Black tread on black core.
- Note: Select bearings featured are recommended for standard applications. For special applications or alternate bearings consult factory. See bearing information on page 13
- For customization & special application options, please consult factory
- Tapered bearings are recommended for towing applications



70 Shore D Models

Capacity increases 20% for 70 Shore D durometer models
(To order, add 70D to end of wheel number)



Ergonomic Option

80 Shore A Models
Capacity decreases 20% for 80 Shore A durometer models
(To order, add 80A to end of wheel number)

| Thick Tread Polyurethane on Cast Iron Core (PX) | | | | | | | | | |
|---|----------------------|--|---------------------|------------------|---------------------|-------------------|----------------------------------|--|--|
| Wheel Diameter (Inches) | Tread Width (Inches) | Capacity (Lbs) (Rate for manual operation) | Hub Length (Inches) | Bore ID (Inches) | Bearing ID (Inches) | Approx. Wt. (Lbs) | Wheel Number Roller Bearing (01) | Wheel Number Tapered Roller Bearing (09) | |
| 6 | 3 | 2250 | 3-1/4 | 1-15/16 | 1 | 13-3/4 | PX0650116 | | |
| 6 | 3 | 2250 | 3-1/4 | 1-15/16 | 1-1/4 | 13-3/4 | PX0650120 | | |
| 6 | 3 | 2250 | 3-1/2 | 1-15/16 | 3/4 | 13-1/4 | | PX0650912 | |
| 6 | 3 | 2250 | 3-1/2 | 1.98 | 1 | 13-1/4 | | PX0650916 | |
| 8 | 2-1/2 | 2200 | 3-1/4 | 1-15/16 | 1 | 13 | PX0840116 | | |
| 8 | 2-1/2 | 2200 | 3-1/4 | 1-15/16 | 1-1/4 | 13 | PX0840120 | | |
| 8 | 2-1/2 | 2200 | 3-1/2 | 1-15/16 | 3/4 | 12-3/4 | | PX0840912 | |
| 8 | 3 | 2780 | 3-1/4 | 1-15/16 | 1 | 16 | PX0850116 | | |
| 8 | 3 | 2780 | 3-1/4 | 1-15/16 | 1-1/4 | 16 | PX0850120 | | |
| 8 | 3 | 2780 | 3-1/2 | 1-15/16 | 3/4 | 15-3/4 | | PX0850912 | |
| 8 | 3 | 2780 | 3-1/2 | 1.98 | 1 | 15-3/4 | | PX0850916 | |
| 8 | 4 | 3850 | 4-1/4 | 2-7/16 | 1-1/4 | 23-3/4 | PX0870120 | | |
| 8 | 4 | 3850 | 4-1/4 | 2-7/16 | 1-1/2 | 23-3/4 | PX0870124 | | |
| 8 | 4 | 3850 | 4-1/2 | 2-7/16 | 1 | 22-1/2 | | PX0870916 | |
| 8 | 4 | 3850 | 4-1/2 | 2-7/16 | 1-1/4 | 22-1/2 | | PX0870920 | |
| 10 | 2-1/2 | 2600 | 3-1/4 | 1-15/16 | 1 | 17-1/4 | PX1040116 | | |
| 10 | 2-1/2 | 2600 | 3-1/4 | 1-15/16 | 1-1/4 | 17-1/4 | PX1040120 | | |
| 10 | 3 | 3300 | 3-1/4 | 1-15/16 | 1 | 20-1/2 | PX1050116 | | |
| 10 | 3 | 3300 | 3-1/4 | 1-15/16 | 1-1/4 | 20-1/2 | PX1050120 | | |
| 10 | 3 | 3300 | 3-1/2 | 1-15/16 | 3/4 | 20 | | PX1050912 | |
| 10 | 3 | 3300 | 3-1/2 | 1.98 | 1 | 20 | | PX1050916 | |
| 10 | 3 | 3300 | 3-1/2 | 2.33 | 1-1/4 | 20 | | PX1050920 | |
| 10 | 4 | 4620 | 4-1/4 | 2-7/16 | 1-1/4 | 30-1/4 | PX1070120 | | |
| 10 | 4 | 4620 | 4-1/4 | 2-7/16 | 1-1/2 | 30-1/4 | PX1070124 | | |
| 10 | 4 | 4620 | 4-1/2 | 2-7/16 | 1 | 29 | | PX1070916 | |
| 10 | 4 | 4620 | 4-1/2 | 2-7/16 | 1-1/4 | 29 | | PX1070920 | |
| 10 | 5 | 5500 | 5-1/4 | 2-7/16 | 1-1/4 | 41-1/4 | PX1080120 | | |
| 10 | 5 | 5500 | 5-1/4 | 2-7/16 | 1-1/2 | 41-1/4 | PX1080124 | | |
| 10 | 5 | 5500 | 5-1/2 | 2-7/16 | 1 | 39-1/4 | | PX1080916 | |
| 10 | 5 | 5500 | 5-1/2 | 2-7/16 | 1-1/4 | 39-1/4 | | PX1080920 | |
| 12 | 3 | 3760 | 3-1/4 | 1-15/16 | 1 | 28-1/4 | PX1250116 | | |
| 12 | 3 | 3760 | 3-1/4 | 1-15/16 | 1-1/4 | 28-1/4 | PX1250120 | | |
| 12 | 3 | 3760 | 3-1/2 | 1-15/16 | 3/4 | 28 | | PX1250912 | |
| 12 | 3 | 3760 | 3-1/2 | 1.98 | 1 | 28 | | PX1250916 | |
| 12 | 3 | 3760 | 3-1/2 | 2.33 | 1-1/4 | 28 | | PX1250920 | |
| 12 | 4 | 5280 | 4-1/4 | 2-7/16 | 1-1/4 | 36-3/4 | PX1270120 | | |
| 12 | 4 | 5280 | 4-1/4 | 2-7/16 | 1-1/2 | 36-3/4 | PX1270124 | | |
| 12 | 4 | 5280 | 4-1/2 | 2-7/16 | 1 | 35-1/2 | | PX1270916 | |
| 12 | 4 | 5280 | 4-1/2 | 2-7/16 | 1-1/4 | 35-1/2 | | PX1270920 | |
| 12 | 5 | 6600 | 5-1/4 | 2-7/16 | 1-1/4 | 48 | PX1280120 | | |
| 12 | 5 | 6600 | 5-1/4 | 2-7/16 | 1-1/2 | 48 | PX1280124 | | |
| 12 | 5 | 6600 | 5-1/2 | 2-7/16 | 1 | 47 | | PX1280916 | |
| 12 | 5 | 6600 | 5-1/2 | 2-7/16 | 1-1/4 | 47 | | PX1280920 | |
| 12 | 6 | 8250 | 6-1/2 | 2.33 | 1-1/4 | 25-3/4 | | PX1290920 | |
| 16 | 3 | 4680 | 4-1/4 | 2-7/16 | 1-1/4 | 51 | PX1650120 | | |
| 16 | 3 | 4680 | 4-1/4 | 2-7/16 | 1-1/2 | 51 | PX1650124 | | |
| 16 | 3 | 4680 | 4-1/2 | 2-7/16 | 1 | 49-3/4 | | PX1650916 | |
| 16 | 3 | 4680 | 4-1/2 | 2-7/16 | 1-1/4 | 49-3/4 | | PX1650920 | |
| 16 | 4 | 6570 | 4-1/4 | 2-7/16 | 1-1/4 | 65 | PX1670120 | | |
| 16 | 4 | 6570 | 4-1/4 | 2-7/16 | 1-1/2 | 65 | PX1670124 | | |
| 16 | 4 | 6570 | 4-1/2 | 2-7/16 | 1-1/4 | 63 | | PX1670920 | |
| 16 | 5 | 8470 | 5-1/4 | 2-7/16 | 1-1/4 | 85 | PX1680120 | | |
| 16 | 5 | 8470 | 5-1/4 | 2-7/16 | 1-1/2 | 85 | PX1680124 | | |
| 16 | 5 | 8470 | 5-1/2 | 2-7/16 | 1-1/4 | 85 | | PX1680920 | |

POLYURETHANE ON CAST IRON • UP TO 8470

^Towing: Consult factory prior to ordering to ensure selection supports your towing requirement