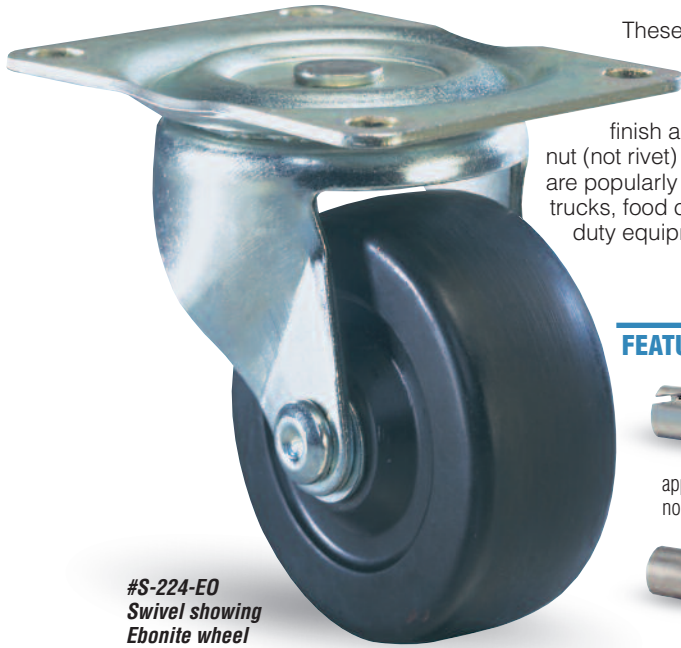


## Leader Casters



#S-224-EO  
Swivel showing  
Ebonite wheel

These are the price leaders of the Hamilton line. Nevertheless, you will find quality features like bright zinc plated finish and hardware, with bolt and nut (not rivet) axles used exclusively. They are popularly used on dollies, laundry trucks, food containers and other light duty equipment.

### FEATURED WHEEL BEARINGS



#### Straight Roller Bearings:

traditional anti-friction bearing, best for manual applications where shock loading (but no side thrust) is prevalent.

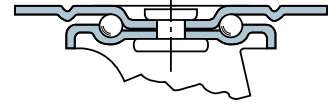


#### Oilless Sleeve Bearings (O):

sintered iron, practical for light loads.

### QUALITY FEATURES

**Swivel Construction** – heavy gauge steel.



**Kingpin** – husky rivet type.

**Load Bearing** – single row of steel balls rotating in deeply embossed raceways.

**Axle** – bolt with lock nut; 5/16" diameter with 2 1/2" wheels, 3/8" diameter with 3" wheels, and 7/16" diameter with 4" wheels.

**Lubrication** – swivel raceway pregreased at factory; hollow axle or fitting in wheel hub provided for lubricating roller bearing wheels.

### WHEEL CHOICES for more help, see pages 14 & 15



**Aqualite®:**  
solid polyolefin,  
water &  
chemical  
resistant



**Ebonite:**  
solid extra  
hard rubber



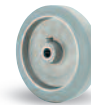
**Metal:**  
cast iron,  
heavy duty  
design



**Plastex:**  
phenolic,  
low cost,  
high  
capacity



**Moldon Rubber:**  
1" thick 70D  
rubber, tensile  
strength exceeds  
1,000 psi

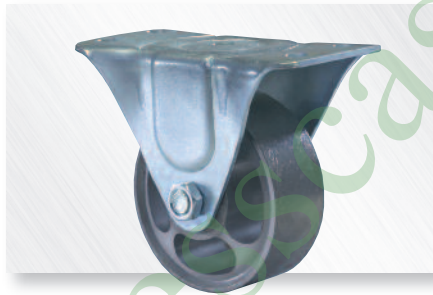


**Vulcalite™:**  
70A rubber  
molded to  
aluminum  
center

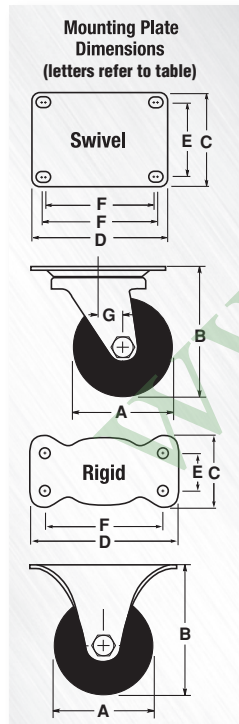
### BRAKE CHOICE for more help, see page 20



Thumbscrew Brake



#R-223-M Rigid showing sintered iron wheel. Rigid Leader models are of one-piece heavy gauge steel, formed to match the strength of their swivel mates.



★ = same day/next day **PRONTO®** shipment.

### 200 Series Selection Table

Dia. A	Face	Type	Wheel		Swivel Caster		Rigid Caster		Load Cap. Lbs.	Overall Height B	Swivel Offset G	Swivel Plate			Rigid Plate		
			Replacement Number	Bearing	Hamilton Model No.	Wt. Lbs.	Hamilton Model No.	Wt. Lbs.				Size CxD	Holes ExF	Bolt Size	Size CxD	Holes ExF	Bolt Size
2 1/2"	1	Sintered Iron	W-210-ML-3/8"	Plain	★ S-222 1/2-M	1 1/2	★ R-222 1/2-M	1 1/4	200	3 1/4"	1 1/8"	2 3/4" x 3 3/4"	1 3/4" x 3	5/16"	2 1/4" x 4 1/2"	1 1/8" x 3 1/2"	5/16"
	1 1/4"	Ebonite	W-25-EO-3/8"	Oilless	★ S-222 1/2-EO	1 1/4	★ R-222 1/2-EO	1	175								
		Flexonite	W-25-FO-3/8"	Oilless	★ S-222 1/2-FO	1 1/4	★ R-222 1/2-FO	1	120								
3"	1 1/4"	Flexonite	W-30-FO-3/8"	Oilless	★ S-223-FO	1 1/2	★ R-223-FO	1 1/4	125	3 3/4"	1 3/8"	3 3/4" x 4 1/4"	2 3/8" x 3 3/8"-3 1/2"	5/16"	2 1/2" x 5	1 3/8" x 4	5/16"
		Flexonite*	W-30-FH-3/8"	Roller	S-223-FH	2	R-223-FH	1 3/4	125								
		Sintered Iron	W-312-ML-3/8"	Plain	★ S-223-M	2 1/4	★ R-223-M	2	250								
		Sintered Iron*	W-312-M-3/8"	Roller	★ S-223-MH	2 1/2	★ R-223-MH	2 1/4	250								
	1 1/8"	Aqualite®	W-30-A-3/8"	Plain	★ S-223-A	1 1/4	★ R-223-A	1	230								
4"		Aqualite®	W-415-A-3/8"	Plain	★ S-224-A	2 3/4	★ R-224-A	2	300	5"	1 1/8"	4" x 5 1/2"	3" x 4	3/8"	3" x 6 3/8"	1 3/4" x 5	3/8"
		Ebonite	W-415-EO-3/8"	Oilless	★ S-224-EO	3	★ R-224-EO	2 1/4	300								
		Ebonite*	W-415-EH-3/8"	Roller	★ S-224-EH	3 3/4	★ R-224-EH	2 1/2	300								
		Flexonite	W-415-FO-3/8"	Oilless	★ S-224-FO	3 3/4	★ R-224-FO	2 1/2	200								
		Flexonite*	W-415-FH-3/8"	Roller	★ S-224-FH	3 3/4	★ R-224-FH	2 1/2	200								
	1 1/2"	Metal	W-416-ML-7/8"	Plain	★ S-224-M	4 1/2	★ R-224-M	2	375								
		Metal	W-415-M-3/8"	Roller	★ S-224-MH	4 1/4	★ R-224-MH	3 1/2	375								
		Plastex*	W-415-P-3/8"	Roller	★ S-224-PH	3 3/4	★ R-224-PH	2 1/2	375								
		M.O. Rubber*	W-415-R-3/8"	Roller	★ S-224-RH	4 1/4	★ R-224-RH	3 1/2	200								
		Vulcalite™	W-415-AR-3/8"	Ball	★ S-224-AR	3 3/4	★ R-224-AR	3	200								

\*These wheels lubricated through lube axle.