

Standard Duty Casters



#S-526-SWF
Swivel showing
Swivel-EAZ® wheel

PRONTO® availability on a quality caster equipped with:

- 4 Position Swivel lock
- Side Foot Brake
- Sealed Swivel Assembly

Hard to believe? Not if you've dealt with Hamilton before.

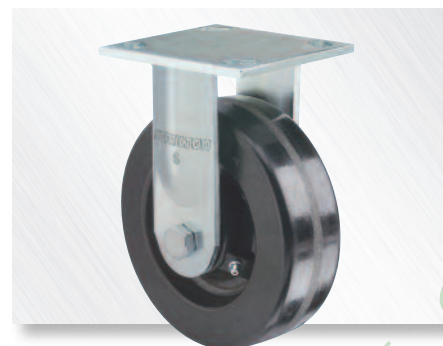
Hamilton's 52 Series gives you an unprecedented range of optional accessories in a value-priced, multi-purpose caster in the 900-lb. class.

Just look at the many options available and featured on these facing pages! Then look at the extensive range of wheel types and sizes available in the chart on page 53. You'll feel like you're specifying casters customized for your very own application... but surprise! They're in stock and shippable PRONTO® even equipped with options (in limited quantities, of course; other options take only a week or two longer).

Improvements to the 52 Series include the addition of the Swivel EAZ® wheel type (a unique twin wheel poly on aluminum center), metal wheels join the many others that now come standard with precision ball bearings, and a new foot contact brake.

Series 52 swivel models feature a full 1/4" thick mounting plate, two separate hardened raceways, husky 2" wide legs, and a 5/8" spin-riveted kingpin. The lustrous zinc plated finish will help these long-lasting casters keep their good looks.

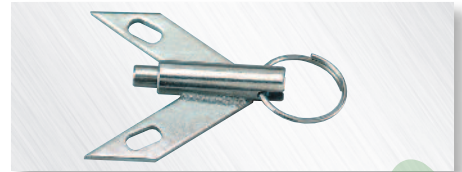
Now, you can truly have it your way, PRONTO®!



#R-526-P Rigid showing Plastex wheel. Zinc plated Series 52 rigids have 1/4" x 2" plate steel legs, fully welded inside and outside to 1/4" thick rounded-corner mounting plates.



OPTIONAL ACCESSORIES more help on page 13



- **Swivel Lock – Field Installable (★-4SL)**
– convert swivel to rigid for straight line steering

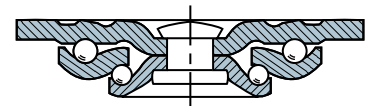


- **Sealed Swivel Assembly (★-SS)**
– prolongs caster life in harsh environments

- **Wheel Bearing Seals (-BS)**
– prolong wheel life in harsh environments

QUALITY FEATURES

Swivel Construction – formed steel mounting plate and horn base. Legs 3/16" x 2" plate steel, contoured and continuously welded to horn base.



Kingpin – 5/8" diameter orbitally formed rivet.

Main and Secondary Load Bearings – hardened and polished steel balls rotate in two heat treated raceways.

Axle – 1/2" diameter bolt with lock nut.

Lubrication Fittings – in swivel assembly and in wheels with roller bearings.

BRAKE CHOICES for more help, see page 20

★-CB†



Tread Contact Brake

★-FB†



Side Foot Brake

★-FRB†



Rap-A-Round Foot Brake

-B



Thumbscrew Brake

[† not available on 3/4" dia. models]

Standard Duty Casters

WHEEL CHOICES *for more help, see pages 14 & 15*



Ace-Tuf®:
cushion rubber on polypropylene core.



Aqualite®:
solid poly-olefin, water & chemical resistant



Duralast®:
95A poly on iron – our standard urethane



Metal:
cast iron, heavy duty design



Plastex:
phenolic, low cost, high capacity



Polylast™:
Donut Tread 85A Poly on Aluminum Core



Poly-Soft®:
85A softer poly on iron – quieter, easy rolling, debris resistant urethane



Poly-Tech®:
90A poly on propylene core, lighter duty institutional use.



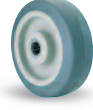
Moldon Rubber:
1" thick 70D rubber, tensile strength exceeds 1,000 psi



Swivel-EAZ®:
Twin Wheel Poly on Aluminum, easy turning



Unilast®:
95A solid poly – institutional use



Versa-Tech®:
65A non-marking lt. gray rubber on propylene core

★ = same day/next day **PRONTO®** shipment.

52 Series Selection Table

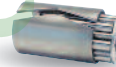
Dia. A	Face	Wheel		Swivel Caster		Rigid Caster		Load Cap. Lbs.	Overall Height B	Swivel Offset G				
		Type	Replacement Number	Hamilton Model No.	Wt. Lbs.	Hamilton Model No.	Wt. Lbs.							
3 1/4	2	Duralast®*	W-320-D-3/4	★S-523-D	5	★R-523-D	4	575	5 1/4	1%				
		Plastex*	W-320-P-3/4	★S-523-P	4	★R-523-P	3	700						
4	2	Aqualite®	W-420-AZ-3/4	★S-524-AZ	4	★R-524-AZ	4	550	5 5/8	1%				
		Duralast®	W-420-DB-1/2	★S-524-DB	8	★R-524-DB	7	750						
		Metal	W-420-MB-1/2	★S-524-MB	7	★R-524-MB	7	900						
		Plastex	W-420-P-3/4	★S-524-P	5	★R-524-P	5	800						
		Polylast™	W-422-AYB-1/2	★S-524-AYB	6	★R-524-AYB	5	300						
		Poly-Soft®	W-420-SPB-1/2	★S-524-SPB	8	★R-524-SPB	7	600						
		Poly-Tech®	W-420-NF-3/4	★S-524-NF	5	★R-524-NF	4	750						
		M.O. Rubber	W-420-R-3/4	★S-524-R	7	★R-524-R	7	300						
		Swivel-EAZ™	W-420-SWF-1/2	★S-524-SWF	7	★R-524-SWF	6	875						
		Unilast®	W-420-UYB-1/2	★S-524-UYB	5	★R-524-UYB	5	750						
		Versa-Tech®	W-420-TE-3/4	★S-524-TE	5	★R-524-TE	4	300						
5	2	Aqualite®	W-520-AZ-3/4	★S-525-AZ	5	★R-525-AZ	4	650	6 1/2	1%				
		Duralast®	W-520-DB-1/2	★S-525-DB	8	★R-525-DB	7	900						
		Metal	W-520-MB-1/2	★S-525-MB	9	★R-525-MB	8	900						
		Plastex	W-520-P-3/4	★S-525-P	6	★R-525-P	5	900						
		Poly-Soft®	W-520-SPB-1/2	★S-525-SPB	8	★R-525-SPB	7	840						
		Poly-Tech®	W-520-NF-3/4	★S-525-NF	5	★R-525-NF	5	900						
		M.O. Rubber	W-520-R-3/4	★S-525-R	7	★R-525-R	7	350						
		Unilast®	W-520-UYB-1/2	★S-525-UYB	6	★R-525-UYB	5	900						
		Versa-Tech®	W-520-TE-3/4	★S-525-TE	5	★R-525-TE	5	350						
		6	2	Aqualite®	W-620-AZ-3/4	★S-526-AZ	5	★R-526-AZ			5	750	7 1/2	1 1/8%
Duralast®	W-620-DB-1/2			★S-526-DB	10	★R-526-DB	9	900						
Metal	W-620-MB-1/2			★S-526-MB	9	★R-526-MB	9	900						
Plastex	W-620-P-3/4			★S-526-P	7	★R-526-P	6	900						
Polylast™	W-622-AYB-3/4			★S-526-AYB	7	★R-526-AYB	6	600						
Poly-Soft®	W-620-SPB-1/2			★S-526-SPB	10	★R-526-SPB	9	900						
Poly-Tech®	W-620-NF-3/4			★S-526-NF	6	★R-526-NF	5	900						
M.O. Rubber	W-620-R-3/4			★S-526-R	8	★R-526-R	8	410						
Swivel-EAZ™	W-620-SWF-1/2			★S-526-SWF	10	★R-526-SWF	9	900						
Unilast®	W-620-UYB-1/2			★S-526-UYB	6	★R-526-UYB	6	900						
Versa-Tech®	W-620-TE-3/4			★S-526-TE	6	★R-526-TE	5	410						
8	2			Ace-Tuf®	W-8-AT-3/4	★S-4208-AT	8	★R-4208-AT	8	400	9 1/2	2%		
				Aqualite®	W-820-AZ-3/4	★S-528-AZ	6	★R-528-AZ	6	900				
		Duralast®	W-820-DB-1/2	★S-528-DB	13	★R-528-DB	12	900						
		Metal	W-820-MB-1/2	★S-528-MB	12	★R-528-MB	12	900						
		Plastex	W-820-P-3/4	★S-528-P	8	★R-528-P	8	900						
		Polylast™	W-822-AYB-3/4	★S-528-AYB	8	★R-528-AYB	8	900						
		Poly-Soft®	W-820-SPB-1/2	★S-528-SPB	13	★R-528-SPB	13	900						
		Poly-Tech®	W-820-NF-3/4	★S-528-NF	7	★R-528-NF	6	900						
		M.O. Rubber	W-820-R-3/4	★S-528-R	11	★R-528-R	11	500						
		Swivel-EAZ™	W-820-SWF-1/2	★S-528-SWF	11	★R-528-SWF	10	900						
		Unilast®	W-820-UYB-1/2	★S-528-UYB	7	★R-528-UYB	6	900						
		Versa-Tech®	W-820-TE-3/4	★S-528-TE	6	★R-528-TE	6	500						

*These wheels lubricated through lube axle.

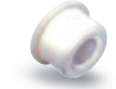
FEATURED WHEEL BEARINGS



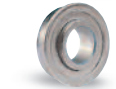
Precision Ball Bearings (B): double sealed, maintenance free, superior rollability aids manual applications, not recommended if shock loading is prevalent.



Straight Roller Bearing (L): traditional anti-friction bearing, best for manual applications where shock loading (but no side thrust) is prevalent.



Delrin® Bearings (Z): chemical and corrosion resistant plastic-type bearing.



Ball Bearings: Non-precision, used in Ace-Tuf® wheel.

