

Maxi-Duty Dual Wheel Casters

...Featuring New HPI™ Swivel Technology



#S-MDD-104SYT
Swivel showing
Superlast® wheels

This dual-wheel series version of the *Maxi-Duty Caster* addresses the problem of how to restrict overall height while at the same time provide adequate carrying capacity on resilient tread wheels. *Dual-Wheel Casters* also improve stability and swivel more easily than wider-face single wheels because differential action reduces the “scrubbing” effect of soft treads against the floors. The series still touts its “precision” feature indicating that both the secondary thrust bearing and the main load bearing are precision-made, and yet the new *HPI™ Swivel Technology* is now a standard feature in this dual wheel series providing smoother swiveling and longer life.

For dual wheel casters in use with lighter duty applications, see page 34.

OPTIONAL ACCESSORIES more help on page 13



- **Swivel Lock– 4 position (-4SL)**
–convert swivel to rigid for straight line steering, robotically welded housing & CNC-milled slots assure long lasting, trouble-free performance.



- **Sealed Swivel Assembly (-SS)**
–prolongs caster life in harsh environments
- **Wheel Bearing Seals (-DS)**
–prolong wheel life in harsh environments
- **Custom Engineering**
–Hamilton engineers will custom design any caster to meet customer requirements.

QUALITY FEATURES

Swivel Construction – 5/8" thick drop forged steel mounting plate (rigid plate 1/2" thick); outer legs 3/8" x 5" plate steel continuously welded inside and outside to forged steel horn base (center leg 3/8" x 2").

Kingpin – 1/4" dia. integrally forged with mounting plate guaranteed for life, prevents bending or breaking; threaded for 1/4" slotted nut secured by roll pin for positive locking.

Main Load Bearing – *HPI™* thrust bearing with outside diameter of 7 1/2"; raceways hardened to 58-62HRC and ground to surface finish 16 micro inches.

Secondary Load Bearing – 1/4" precision tapered thrust bearing counteracts radial thrust.

Axle – 1/4" diameter grade 5 hex head with slotted nut and cotter pin.

Lubrication Fittings – Ball-check type in swivel assembly and in wheel hubs with tapered or straight roller bearings.



The enhanced *Maxi-Duty Dual Wheel Series* now features *Hamilton's Precision Integrated HPI™ Swivel Technology*. This new technology outperforms conventional CNC-machined ball raceways, kingpinless, and unit load bearing swivel constructions.

The new design improves the bearing's element of contact and more than doubles the number of contact points. The new *HPI™* raceways are also 45% harder than conventional hardened raceways and the surface finish is an incredibly smooth 16 micro inches.

BRAKE CHOICE for more help, see page 20

-DHCB



Maxi-Duty Dual Contact Brake

THREE YEAR WARRANTY

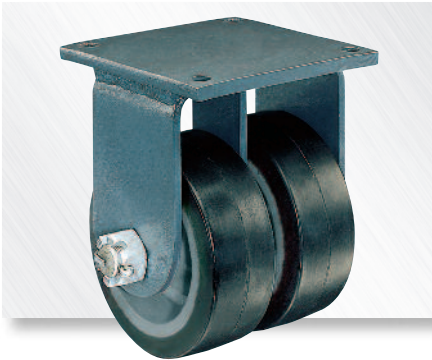


The *Maxi-Duty Dual Series (MDD)* is backed by *Hamilton's Three Year Product Warranty*. Refer to selection table for qualifying wheels.



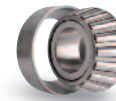
Maxi-Duty Dual Wheel Casters

...Featuring New HPI™ Swivel Technology



#R-MDD-83DB70 Rigid showing Duralast® XC Polyurethane wheels.

FEATURED WHEEL BEARINGS



Precision Tapered Roller Bearings (T): best for most severe heavy duty and power-towed applications.



Precision Ball Bearings (B): double sealed, maintenance free, superior rollability aids manual applications, not recommended if shock loading is prevalent.



Straight Roller Bearing (H): traditional anti-friction bearing, best for manual applications where shock loading (but no side thrust) is prevalent.

WHEEL CHOICES for more help, see pages 14 & 15



Duralast®: 95A poly on iron – our standard urethane



Duralast® XC: 70D poly on iron – extra capacity, harder urethane



Nylast™: high capacity cast nylon, corrosion resistant



Superlast®: 95A 1" thick poly/super duty forged steel center



Superlast® XC: 70D extra hard 1" thick poly/ forged steel center – highest capacity urethane



Super Ulralast™: 95A 1" thick ultimate premium urethane on super duty forged steel center



Ulralast™: 95A – the ultimate premium urethane, outperforms all other urethanes



★ = same day/next day PRONTO® shipment.

MDD Series Selection Table

3YR = 3 Year Warranty applies

Dia. A	Wheel			Swivel Caster			Rigid Caster			Load Cap. Lbs.	Total Ht. B	Swivel Offset G
	Face	Type	Replacement Number*	Hamilton No. † Prec. BB/Roller	Hamilton No. Tapered Brgs.	Wt. Lbs.	Hamilton No. † Prec. BB/Roller	Hamilton No. Tapered Brgs.	Wt. Lbs.			
6	3	Nylast™‡	W-630-NYB-1¼	S-MDD-63NYB	X	58	R-MDD-63NYB	X	36	10800	10	2½
		Duralast®	W-830-DT-1¼	★ S-MDD-83DH 3YR	★ S-MDD-83DT 3YR	76	★ R-MDD-83DH 3YR	★ R-MDD-83DT 3YR	64	5000		
		Duralast XC®	W-830-DT70-1¼	X	S-MDD-83DT70 3YR	76	X	R-MDD-83DT70 3YR	64	6500		
		Nylast™‡	W-830-NYB-1¼	S-MDD-83NYB	X	64	R-MDD-83NYB	X	42	14400		
8	3	Superlast®	W-830-SYT-1¼	X	★ S-MDD-83SYT 3YR	99	X	★ R-MDD-83SYT 3YR	87	7000	11	2½
		Superlast XC®	W-830-SYT70-1¼	X	S-MDD-83SYT70 3YR	99	X	R-MDD-83SYT70 3YR	87	9100		
		Super Ulralast™	W-830-STRT-1¼	X	S-MDD-83STRT 3YR	99	X	R-MDD-83STRT 3YR	87	8400		
		Ulralast™	W-830-TRT-1¼	X	S-MDD-83TRT 3YR	76	X	R-MDD-83TRT 3YR	64	6000		
		Duralast®	W-1030-DT-1¼	S-MDD-13DH 3YR	S-MDD-13DT 3YR	85	R-MDD-13DH 3YR	R-MDD-13DT 3YR	73	6000		
		Duralast XC®	W-1030-DT70-1¼	X	S-MDD-13DT70 3YR	85	X	R-MDD-13DT70 3YR	73	7800		
10	3	Ulralast™	W-1030-TRT-1¼	X	S-MDD-13TRT 3YR	85	X	R-MDD-13TRT 3YR	73	7200	13	3
		Superlast®	W-1040-SYT-1¼	X	★ S-MDD-104SYT 3YR	138	X	★ R-MDD-104SYT 3YR	123	10000		
	4	Superlast XC®	W-1040-SYT70-1¼	X	S-MDD-104SYT70 3YR	138	X	R-MDD-104SYT70 3YR	123	13000		
		Super Ulralast™	W-1040-STRT-1¼	X	S-MDD-104STRT 3YR	138	X	R-MDD-104STRT 3YR	123	12000		
12	3	Duralast®	W-1230-DT-1¼	S-MDD-12DH 3YR	S-MDD-12DT 3YR	125	R-MDD-12DH 3YR	R-MDD-12DT 3YR	115	7000	15½	3¼
		Duralast XC®	W-1230-DT70-1¼	X	S-MDD-12DT70 3YR	115	X	R-MDD-12DT70 3YR	115	9100		
		Ulralast™	W-1230-TRT-1¼	X	S-MDD-12TRT 3YR	125	X	R-MDD-12TRT 3YR	115	8400		
	4	Duralast®	W-1240-DT-1¼	X	S-MDD-124DT 3YR	135	X	R-MDD-124DT 3YR	125	9600		
		Superlast®	W-1240-SYT-1¼	X	★ S-MDD-124SYT 3YR	213	X	★ R-MDD-124SYT 3YR	159	12000		
		Superlast XC®	W-1240-SYT70-1¼	X	S-MDD-124SYT70 3YR	213	X	R-MDD-124SYT70 3YR	159	15600		
		Super Ulralast™	W-1240-STRT-1¼	X	S-MDD-124STRT 3YR	213	X	R-MDD-124STRT 3YR	159	14400		

* With Tapered roller bearings. For catalog number of corresponding precision ball or straight roller bearing wheels, consult factory.

† Hamilton No.s ending in B = Prec. Ball Bearing, H = Straight Roller Bearing, T = Tapered Roller Bearing,

‡ Straight-sided wheel.