

Stainless Steel Casters**QUALITY FEATURES**

Swivel Construction – Mounting plate and horn base, Type 304 stainless steel. Sealed swivel assembly standard.

Kingpin – permanent rivet-type, 1/2" diameter stainless steel.

Main and Secondary Load Bearings – Type 440 stainless steel balls rotating in two smoothly coined raceways.

Axle – 3/8" diameter stainless steel lube-type bolt and lock nut.

Lubrication – Pre-lubricated at factory with a high quality multi-purpose grease

FEATURED WHEEL BEARINGS

**Stainless Steel
Ball Bearings (B)**



**Delrin®
Bearings (Z)**

BRAKE CHOICE for more help, see page 20**★-SSCB**

Stainless Steel Tread Contact Brake
[4" and 5" swivels only]



★ = same day/next day **PRONTO®** shipment.

This innovative stainless steel series ably complements the heavier duty *Series STA* described on the facing page. *Series STL* features a complete line of wheel offerings with face widths under 2", including wheels of stainless steel. Most offerings are available for *PRONTO®* shipment within two days.

Manufactured from all-stainless steel components, these casters undergo a special process resulting in a handsome, high lustre finish that is less porous and easier to clean than comparable stainless steel brands. A sealed swivel assembly is standard on *Series STL Casters*.

Ideal for corrosive environments and wherever sanitary considerations are important, *Series STL Casters* are well suited for pharmaceutical houses, food service operations, animal cages, laboratories, and other institutional applications.

WHEEL CHOICES for more help, see pages 14 & 14

Aqualite®:
solid polyolefin,
water and
chemical
resistant



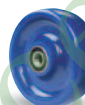
**Hi-Heat
Plastex®:**
phenolic, heat
resistant, high
capacity



Poly-Tech®:
90A poly on
propylene core,
lighter duty
institutional use.



Stainless:
highest capacity,
tensile strength
75,000 psi.



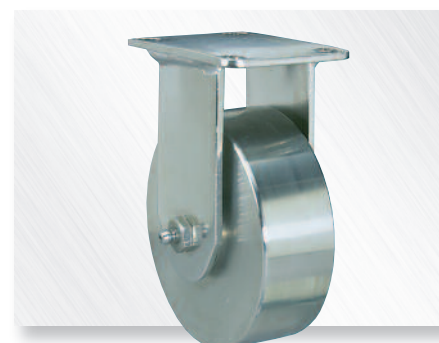
Unilast®:
95A solid
poly – insti-
tutional use



Versa-Tech®:
65A non-mark-
ing light gray
rubber on
propylene core



#S-STL-5NFS
Swivel showing
Poly-Tech®
wheel



#R-STL-4S Rigid showing Stainless
Steel wheel

STL Series Selection Table

Wheel					Swivel Caster		Rigid Caster		Load	Overall	Swivel
Dia. A	Face	Type	Bearing	Replacement Number	Hamilton Model No.	Wt. Lbs.	Hamilton Model No.	Wt. Lbs.	Cap. Lbs.	Height B	Offset G
3	1 1/2"	Stainless	S.S. Ball	W-313-SB-1/2"	★ S-STL-3SB	5	★ R-STL-3SB	5	325	4 1/2"	1 1/2"
3 1/2	1 1/2"	Aqualite®	Plain	W-35-A-1/2"	★ S-STL-35A	2	★ R-STL-35A	2	260	4 3/8"	1 1/2"
		Poly-Tech®	Delrin	W-35-NFZ-1/2"	★ S-STL-35NFZ	2	★ R-STL-35NFZ	2	325		
		Versa-Tech®	Delrin	W-35-TEZ-1/2"	★ S-STL-35TEZ	2	★ R-STL-35TEZ	2	240		
4	1 1/4"	Plastex	Plain	W-412-HHPL-1/2"	★ S-STL-4HHP	2	★ R-STL-4HHP	2	300	5 1/2"	1 1/2"
		Unilast®	Delrin	W-412-UYZ-1/2"	★ S-STL-4UYZ	2	★ R-STL-4UYZ	2	325		
		Aqualite®	Plain	W-413-A-1/2"	★ S-STL-4A	2	★ R-STL-4A	2	300		
		Poly-Tech®	Delrin	W-413-NFZ-1/2"	★ S-STL-4NFZ	2	★ R-STL-4NFZ	2	325		
		Versa-Tech®	Delrin	W-413-TEZ-1/2"	★ S-STL-4TEZ	2	★ R-STL-4TEZ	2	250		
	1 1/2"	Stainless	Plain	W-413-S-1/2"	★ S-STL-4S	6	★ R-STL-4S	6	325		
		S.S. V-Grooved	Plain	W-413-SV-1/2"	★ S-STL-4SV	6	★ R-STL-4SV	5	325		
		Stainless	Delrin	W-413-SZ-1/2"	★ S-STL-4SZ	6	★ R-STL-4SZ	6	325		
		S.S. V-Grooved	Delrin	W-413-SVZ-1/2"	★ S-STL-4SVZ	6	★ R-STL-4SVZ	5	325		
		Stainless	S.S. Ball	W-413-SB-1/2"	★ S-STL-4SB	6	★ R-STL-4SB	6	325		
5	1 1/4"	S.S. V-Grooved	S.S. Ball	W-413-SVB-1/2"	★ S-STL-4SVB	6	★ R-STL-4SVB	5	325	6 1/2"	1 1/2"
		Plastex	Plain	W-512-HHPL-1/2"	★ S-STL-5HHP	3	★ R-STL-5HHP	2	300		
	1 1/2"	Aqualite®	Plain	W-513-A-1/2"	★ S-STL-5A	3	★ R-STL-5A	2	300		
		Poly-Tech®	Delrin	W-513-NFZ-1/2"	★ S-STL-5NFZ	3	★ R-STL-5NFZ	2	325		
		Versa-Tech®	Delrin	W-513-TEZ-1/2"	★ S-STL-5TEZ	3	★ R-STL-5TEZ	2	275		

▶ Stainless steel ball bearings also available in these wheels, simply change "Z" to "B".

