

# NON-MAGNETIC NYLON (NM)

## TOP PLATE MODELS

FREE SWIVEL • TOTAL LOCK • DIRECTION LOCK



### APPLICATIONS

- MRI conditional equipment
- Hospital Carts
- Utility Carts
- Medical Equipment
- Electronic Equipment

### FEATURES

- Designed for use in areas where casters need to have reduced magnetic properties
- Maintenance free
- Sealed precision bearing raceway, smooth and quiet
- **Total Lock Brake** models lock both swivel and wheel
- Directional lock models lock swivel only (helps with steering)
- Wheels feature Delrin bearings
- Resistance to most chemicals
- Top plate made of 316SS Stainless steel
- Recessed axle with plastic cap covers



Custom Colors Available



316S stainless steel precision sealed ball bearing raceway design for smooth, quiet maintenance free ride.

Nylon and 316S stainless steel construction allows these casters to have a reduced magnetism.

## SWIVEL TOP PLATE MODELS

Precision sealed ball bearing raceway design for smooth, quiet maintenance free ride.

Wheel Diameter (Inches)	Tread Width (Inches)	Wheel Description	Capacity (Lbs)	Load Height Inches (mm)	Swivel Radius Inches (mm)	Wheel Bearing	Model Number
3	1-1/4	QuikStart TPR	100	4-1/4" (108)	2-13/16" (72)	Delrin	NM-03QDO-125-SW-TPS1
4	1-1/4	QuikStart TPR	150	5-3/4" (146)	3-7/16" (87)	Delrin	NM-04QDO-125-SW-TPS1
5	1-1/4	QuikStart TPR	200	6-7/8" (174)	4" (102)	Delrin	NM-05QDO-125-SW-TPS1



## SWIVEL TOP PLATE TOTAL LOCK MODELS

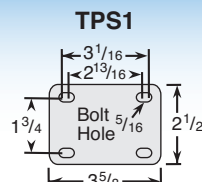
(LOCKS WHEEL AND SWIVEL)

3	1-1/4	QuikStart TPR	100	4-1/4" (108)	3-3/4" (95)	Delrin	NM-03QDO-125-TL-TPS1
4	1-1/4	QuikStart TPR	150	5-3/4" (146)	4-7/16" (112)	Delrin	NM-04QDO-125-TL-TPS1
5	1-1/4	QuikStart TPR	200	6-7/8" (174)	4-7/16" (112)	Delrin	NM-05QDO-125-TL-TPS1



## TOP PLATE FITTING

Swivel Top  
Plate Pattern



# NON-MAGNETIC NYLON (NM)

## THREADED STEM MODELS

FREE SWIVEL • TOTAL LOCK • DIRECTION LOCK



### APPLICATIONS

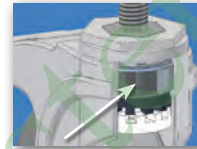
- MRI conditional equipment
- Hospital Carts
- Utility Carts
- Medical Equipment
- Electronic Equipment

### FEATURES

- Designed for use in areas where casters need to have reduced magnetic properties
- Maintenance free
- Sealed precision bearing raceway, smooth and quiet
- **Total Lock Brake** models lock both swivel and wheel
- Directional lock models lock swivel only (helps with steering)
- Wheels feature Delrin bearings
- Resistance to most chemicals
- Recessed axle with plastic cap covers



Custom Colors Available



316S stainless steel precision sealed ball bearing raceway design for smooth, quiet maintenance free ride.

Nylon and 316S stainless steel construction allows these casters to have a reduced magnetism.

## THREADED STEM MODELS

Precision sealed ball bearing raceway design for smooth, quiet maintenance free ride.

Wheel Diameter (Inches)	Tread Width (Inches)	Wheel Description	Capacity (lbs)	Load Height Inches (mm)	Swivel Radius Inches (mm)	Wheel Bearing	Model Number
3	1-1/4	QuikStart TPR	100	4-7/32" (107)	2-13/16" (72)	Delrin	NM-03QDO-125-SW-TSS2
4	1-1/4	QuikStart TPR	150	5-13/32" (137)	3-7/16" (87)	Delrin	NM-04QDO-125-SW-TSS2
5	1-1/4	QuikStart TPR	200	6-1/2" (165)	4" (102)	Delrin	NM-05QDO-125-SW-TSS2



## THREADED STEM TOTAL LOCK MODELS

(LOCKS WHEEL AND SWIVEL)

Wheel Diameter (Inches)	Tread Width (Inches)	Wheel Description	Capacity (lbs)	Load Height Inches (mm)	Swivel Radius Inches (mm)	Wheel Bearing	Model Number
3	1-1/4	QuikStart TPR	100	4-7/32" (107)	3-3/4" (95)	Delrin	NM-03QDO-125-TL-TSS2
4	1-1/4	QuikStart TPR	150	5-13/32" (137)	4-7/16" (112)	Delrin	NM-04QDO-125-TL-TSS2
5	1-1/4	QuikStart TPR	200	6-1/2" (165)	4-7/16" (112)	Delrin	NM-05QDO-125-TL-TSS2

## THREADED STEM FITTINGS

See fittings page for more options.

TSS2



TSS2 stems require special order from the factory and increase lead times.