

2-125 SERIES CASTERS

CASTERS

DUAL WHEEL

ENGINEERED TO OUTPERFORM

UP TO 20,000 LBS CAPACITY

RWM's 2-125 Series Kingpinless™ Dual Wheel Casters feature all of the benefits of our patented Kingpinless™ raceway and offer twice the capacity load. Dual wheel casters offer high weight capacities with minimal overall heights, better load distribution, floor protection and mobility than single wheel casters. This is a result of spreading the weight over a wider floor area while offering wheel differential action, resulting in less friction between the wheels and the floor, requiring less effort for the caster to swivel. Our 2-125 Series Casters are proudly made in the USA!

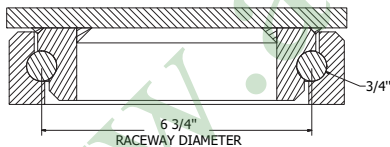


2-125-UIT-1250-S-SL

FEATURES

Raceway Design	Patented Kingpinless™ single ball bearing precision machined raceway hardened to 53 Rockwell C. minimum. 7" diameter raceway with 3/4" diameter ball bearings.
Capacity	Up to 40000 lbs.
Leg Thickness	1/2" thick including the center leg.
Axle	1-1/4" bolt with rotation prevent lug on leg and slotted nut adjustment.
Finish	Laguna Blue powder coat.
Wheels	Wheels are either 4", 5" or 6" wide depending upon diameter and wheel type. Roller bearing wheels are equipped with a bearing which rotates on hardened and ground spacers. Tapered bearing wheels have a 1-1/4" I.D. tapered bearing which rotate directly on a 1- 1/4" axle. All wheels have lubrication fittings.
Mounting Plate Size	8-1/2" x 8-1/2" x 1/2"
Bolt Hole Spacing	7" x 7"
Mounting Bolt Diameter	5/8"

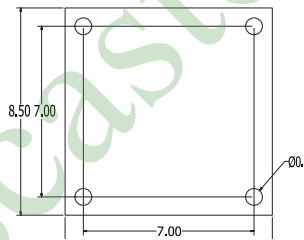
KINGPINLESS RACEWAY



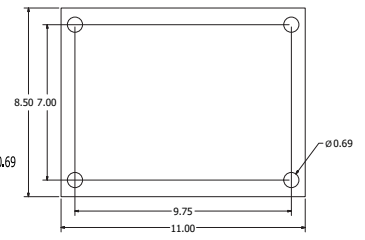
APPLICATIONS

Tow lines	Storage tanks & gantries
Abusive conditions	Shock load applications
Automotive	Production line dollies
Aerospace	Heavy machinery
Metal fabricating	Mobile homes
Military equipment	Extreme duty platform trucks
Tractor pulled trailers	Heavy duty processing equipment
Air cargo & ground support equipment	Coliseum and gymnasium equipment
Boat & ship molding and building	

STANDARD



LLST/LLRT

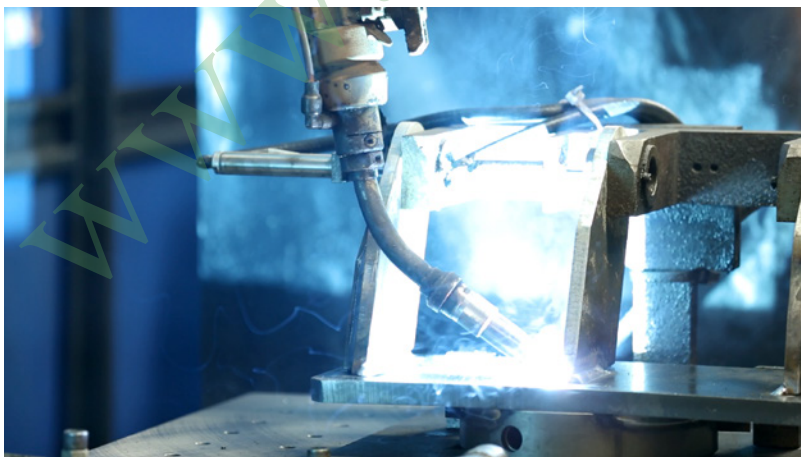


OPTIONS

BRAKES	
PCWB	Poly Cam Wheel Brake
SWIVEL LOCKS	
DSL	Demountable Swivel Lock
HDSL	Heavy Duty Demountable Swivel Lock
LSL	L-Type Swivel Lock
VSL	Vertical Swivel Lock
SL	Swivel Lock
LUBRICATIONS	
HT	High Temperature Lubrication
LT	Low Temperature Lubrication
FINISHES	
HTP	High Temperature Paint
ZP	Zinc Plated
YOKES, GUARDS, SEALS AND OPTIONS	
FG	Foot Guard
SR	Sealed Raceways
SWP	Sweeper Brush
WS	Wheel Seals

Wheel Diameter	Wheel Width	Capacity lbs.	Wheel Type	Overall Height	Swivel Caster Model Numbers		Swivel Lead	Approx Weight lbs.
					Roller Bearing	Tapered Roller Bearing		
8"	4"	7000	Urethane on Iron	11-1/2"	2-125- UIR -0840-S	2-125- UIT -0840-S	2-1/8"	62
		8000	Cast Iron	11-1/2"	2-125- CIR -0840-S	2-125- CIT -0840-S	2-1/8"	70
		20000	Forged Steel	11-1/2"	2-125- FSR -0840-S		2-1/8"	86
		40000	Forged Steel-HD	11-1/2"	2-125- FST -0840-S		2-1/8"	86
10"	4"	8400	Urethane on Iron	13-1/2"	2-125- UIR -1040-S	2-125- UIT -1040-S	2-1/2"	75
		9000	Ultra Thick Urethane	13-1/2"	2-125- UTR -1040-S	2-125- UTT -1040-S	2-1/2"	95
		10000	Cast Iron	13-1/2"	2-125- CIR -1040-S	2-125- CIT -1040-S	2-1/2"	90
		20000	Forged Steel	13-1/2"	2-125- FSR -1040-S		2-1/2"	100
		40000	Forged Steel-HD	13-1/2"	2-125- FST -1040-S		2-1/2"	100
10"	5"	10000	Urethane on Iron	13-1/2"	2-125- UIR -1050-S	2-125- UIT -1050-S	2-1/2"	115
		12000	Cast Iron	13-1/2"	2-125- CIR -1050-S	2-125- CIT -1050-S	2-1/2"	95
12"	4"	9600	Urethane on Iron	15-1/2"	2-125- UIR -1240-S	2-125- UIT -1240-S	2-7/8"	78
		10,600	Ultra Thick Urethane	15-1/2"	2-125- UTR -1240-S	2-125- UTT -1240-S	2-7/8"	90
12"	5"	12000	Urethane on Iron	15-1/2"	2-125- UIR -1250-S	2-125- UIT -1250-S	2-7/8"	90
		13000	Ultra Thick Urethane	15-1/2"	2-125- UTR -1250-S	2-125- UTT -1250-S	2-7/8"	100
12"	6"	15000	Urethane on Iron	15-1/2"	2-125- UIR -1260-S	2-125- UIT -1260-S	2-7/8"	95
		20000	Cast Iron	15-1/2"	2-125- CIR -1260-S	2-125- CIT -1260-S	2-7/8"	130
14"	4"	12400	Ultra Thick Urethane	18-1/2"	2-125- UTR -1440-S	2-125- UTT -1440-S	3-3/8"	120
14"	5"	15200	Ultra Thick Urethane	18-1/2"	2-125- UTR -1450-S	2-125- UTT -1450-S	3-3/8"	150
14"	6"	15600	Urethane on Iron	18-1/2"	2-125- UIR -1460-S	2-125- UIT -1460-S	3-3/8"	170
		18000	Ultra Thick Urethane	18-1/2"	2-125- UTR -1460-S	2-125- UTT -1460-S	3-3/8"	165
16"	4"	12000	Urethane on Iron	19-1/2"	2-125- UIR -1640-S	2-125- UIT -1640-S	3-9/16"	130
		14200	Ultra Thick Urethane	19-1/2"	2-125- UTR -1640-S	2-125- UTT -1640-S	3-9/16"	130
16"	5"	16800	Urethane on Iron	19-1/2"	2-125- UIR -1650-S	2-125- UIT -1650-S	3-9/16"	200
		17600	Ultra Thick Urethane	19-1/2"	2-125- UTR -1650-S	2-125- UTT -1650-S	3-9/16"	210
18"	5"	17200	Urethane on Iron	22"	2-125- UIR -1850-S	2-125- UIT -1850-S	4-3/8"	270
20"	5"	18000	Urethane on Iron	23-1/2"	2-125- UIR -2050-S	2-125- UIT -2050-S	4-5/16"	280

To order a rigid caster, change the "S" to "R" in the model number. For example: "2-125-**CIR**-0840-R". To order rig only, omit the blue letters. For example: "2-125-0840-S". Dimensions shown are nominal. If precise dimensions are required, consult your RWM representative. For approximate weight of our rigid casters, deduct 5.4 pounds per item.



RWM utilizes robotic pulse welding technology for superior weld quality.