

2-76 SERIES CASTERS

CASTERS

DUAL WHEEL

ENGINEERED TO OUTPERFORM

UP TO 7,000 LBS CAPACITY

RWM's 2-76 Series Kingpinless™ Dual Wheel Casters feature all of the benefits of our patented Kingpinless™ raceway and offer twice the capacity load. Dual wheel casters offer high weight capacities with minimal overall heights, better load distribution, floor protection and mobility than single wheel casters. This is a result of spreading the weight over a wider floor area while offering wheel differential action, resulting in less friction between the wheels and the floor, requiring less effort for the caster to swivel. Our 2-76 Series Casters are proudly made in the USA!

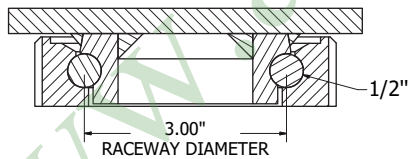


2-76-RAT-1230-S

FEATURES

Raceway Design	Patented Kingpinless™ single ball bearing precision machined raceway hardened to 53 Rockwell C minimum. Swivel section features a 3" diameter raceway with 1/2" ball bearings. Notched yoke is standard.
Capacity	Up to 7000 lbs.
Leg Thickness	3/8."
Axle	3/4" bolt with locking or slotted nut as required.
Finish	Laguna Blue powder coat.
Wheels	Wheels are available with either 1" roller bearings which rotate on hardened and ground spanner bushings or 3/4" tapered bearings that rotate on the axle. All wheels are equipped with a lubrication fitting.
Mounting Plate Size	5-1/4" x 7-1/4" x 3/8"
Bolt Hole Spacing	3-3/8" x 5-1/4", slotted to 4-1/8" x 6-1/8"
Mounting Bolt Diameter	1/2"

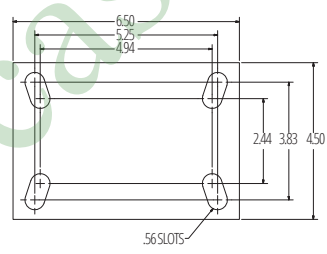
KINGPINLESS RACEWAY



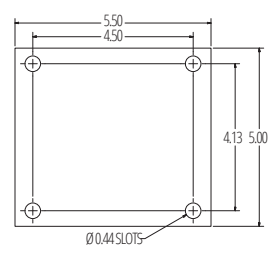
APPLICATIONS

Tow lines	Boat & ship molding and building
Abusive conditions	Storage tanks & gantries
Automotive	Shock load applications
Aerospace	Production line dollies
Metal fabricating	Heavy machinery
Military equipment	Mobile homes
Tractor pulled trailers	Extreme duty platform trucks
Air cargo & ground support equipment	Heavy duty processing equipment

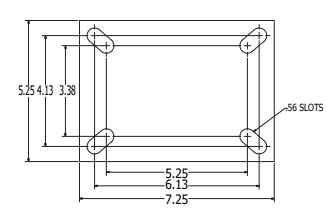
STANDARD



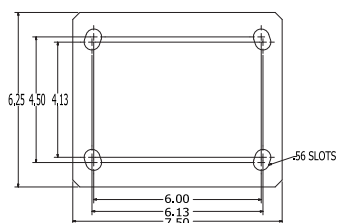
75ST**/75RT**



90ST*/90RT



95ST*/95RT



* Add 1/8" to caster overall height when using this top plate.
 ** Deduct 1/16" from caster overall height when using this top plate.

OPTIONS

BRAKES	
CWB	Cam Wheel Brake
PCWB	Poly Cam Wheel Brake
SWIVEL LOCKS	
DSL	Demountable Swivel Lock
LSL	L-Type Swivel Lock
SL	Swivel Lock
VSL	Vertical Swivel Lock
LUBRICATIONS	
HT	High Temperature Lubrication
LT	Low Temperature Lubrication
GUARDS, FINISHES AND SEALS	
FG	Foot Guard
HTP	High Temperature Paint
SR	Sealed Swivel Raceway
SWP	Sweeper Brush
ZP	Zinc Plated

Wheel Diameter	Wheel Width	Capacity lbs.	Wheel Type	Overall Height	Swivel Caster Model Numbers			Swivel Lead	Approx Weight lbs.
					Roller Bearing	Ball Bearing	Tapered Bearing		
6"	2-1/2"	1080	Rubber on Iron	8-1/16"	2-76-RIR-0625-S			2-1/16"	36.5
		2160	Rubber on Iron-EHT	8-1/16"	2-76-RIR-0625-S-EHT		2-76-RIT-0625-S-EHT	2-1/16"	36.5
		3200	Durastan	8-1/16"	2-76-DUR-0625-S			2-1/16"	21.7
		3240	Urethane on Iron	8-1/16"	2-76-UIR-0625-S		2-76-UIT-0625-S	2-1/16"	39.5
		3600	Cast Iron	8-1/16"	2-76-CIR-0625-S		2-76-CIT-0625-S	2-1/16"	37
		4600	GT	8-1/16"		2-76-GTB-0625-S		2-1/16"	21
6"	3"	1360	Rubber on Iron	8-1/16"	2-76-RIR-0630-S			2-1/16"	33
		2720	Rubber on Iron-EHT	8-1/16"	2-75-RIR-0630-S-EHT		2-76-RIT-0630-S-EHT	2-1/16"	33
		4000	Durastan	8-1/16"	2-76-DUR-0630-S			2-1/16"	24
		4000	Solid Urethane	8-1/16"		2-76-MUB-0630-S		2-1/16"	24
		4000	Urethane on Iron	8-1/16"	2-76-UIR-0630-S		2-76-UIT-0630-S	2-1/16"	33
		5200	Nylatron HD	8-1/16"		2-76-NYB-0630-S		2-1/16"	22
		6000	Cast Iron	8-1/16"	2-76-CIR-0630-S		2-76-CIT-0630-S	2-1/16"	39
8"	2-1/2"	1340	Rubber on Iron	10-1/2"	2-76-RIR-0825-S			2-3/4"	41.5
		2680	Rubber on Iron-EHT	10-1/2"	2-76-RIR-0825-S-EHT		2-76-RIT-0825-S-EHT	2-3/4"	41.5
		3600	Urethane on Iron	10-1/2"	2-76-UIR-0825-S		2-76-UIT-0825-S	2-3/4"	48.5
		4000	Cast Iron	10-1/2"	2-76-CIR-0825-S		2-76-CIT-0825-S	2-3/4"	52
		4000	Durastan	10-1/2"	2-76-DUR-0825-S			2-3/4"	29
		4800	GT	10-1/2"		2-76-GTB-0825-S		2-3/4"	28
8"	3"	1680	Rubber on Iron	10-1/2"	2-76-RIR-0830-S			2-3/4"	52
		3360	Rubber on Iron-EHT	10-1/2"	2-76-RIR-0830-S-EHT		2-76-RIT-0830-S-EHT	2-3/4"	52
		5000	Durastan	10-1/2"	2-76-DUR-0830-S			2-3/4"	28
		5000	Solid Urethane	10-1/2"		2-76-MUB-0830-S		2-3/4"	28
		5000	Urethane on Iron	10-1/2"	2-76-UIR-0830-S		2-76-UIT-0830-S	2-3/4"	52
		6000	Cast Iron	10-1/2"	2-76-CIR-0830-S		2-76-CIT-0830-S	2-3/4"	49
		7000	Nylatron HD	10-1/2"		2-76-NYB-0830-S		2-3/4"	29
10"	2-1/2"	1580	Rubber on Iron	12-1/2"	2-76-RIR-1025-S		2-76-RIT-1025-S	3-1/4"	47.5
		3460	Rubber on Iron-EHT	12-1/2"	2-76-RIR-1025-S-EHT		2-76-RIT-1025-S-EHT	3-1/4"	47.5
		4740	Urethane on Iron	12-1/2"	2-76-UIR-1025-S		2-76-UIT-1025-S	3-1/4"	58.5
		5000	Cast Iron	12-1/2"	2-76-CIR-1025-S		2-76-CIT-1025-S	3-1/4"	63.5
		5000	Durastan	12-1/2"	2-76-DUR-1025-S			3-1/4"	30.5
10"	3"	2000	Rubber on Iron	12-1/2"	2-76-RIR-1030-S		2-76-RIT-1030-S	3-1/4"	61
		4000	Rubber on Aluminum-EHT	12-1/2"		2-76-RAB-1030-S-EHT	2-76-RAT-1030-S-EHT	3-1/4"	61
		4000	Rubber on Iron-EHT	12-1/2"	2-76-RIR-1030-S-EHT		2-76-RIT-1030-S-EHT	3-1/4"	61
		5800	Durastan	12-1/2"	2-76-DUR-1030-S			3-1/4"	31
		6000	Solid Urethane	12-1/2"		2-76-MUB-1030-S		3-1/4"	31
		6000	Urethane on Iron	12-1/2"	2-76-UIR-1030-S		2-76-UIT-1030-S	3-1/4"	61
		6800	GT	12-1/2"		2-76-GTB-1030-S		3-1/4"	31
		6800	Ultra Thick Urethane	12-1/2"	2-76-UTR-1030-S		2-76-UTT-1030-S	3-1/4"	64
12"	2-1/2"	1800	Rubber on Iron	15-1/2"	2-76-RIR-1225-S		2-76-RIT-1225-S	4-1/8"	55.5
		5400	Urethane on Iron	15-1/2"	2-76-UIR-1225-S		2-76-UIT-1225-S	4-1/8"	76.2
		6000	Durastan	15-1/2"	2-76-DUR-1225-S			4-1/8"	44.5
12"	3"	2280	Rubber on Iron	15-1/2"	2-76-RIR-1230-S		2-76-RIT-1230-S	4-1/8"	88
		4560	Rubber on Aluminum-EHT	15-1/2"		2-76-RAB-1230-S-EHT	2-76-RAT-1230-S-EHT	4-1/8"	88
		4560	Rubber on Iron-EHT	15-1/2"	2-76-RIR-1230-S-EHT		2-76-RIT-1230-S-EHT	4-1/8"	88
		6800	Urethane on Iron	15-1/2"	2-76-UIR-1230-S		2-76-UIT-1230-S	4-1/8"	88
		7000	Cast Iron	15-1/2"	2-76-CIR-1230-S		2-76-CIT-1230-S	4-1/8"	88
		7000	Durastan	15-1/2"	2-76-DUR-1230-S			4-1/8"	34
		7000	Ultra Thick Urethane	15-1/2"	2-76-UTR-1230-S		2-76-UTT-1230-S	4-1/8"	101

To order a rigid caster, change the "S" to "R" in the model number. For example: "2-76-CIR-0630-R". To order rig only, omit the blue letters. For example: "2-76-0630-S". Dimensions shown are nominal. If precise dimensions are required, consult your RWM representative. For approximate weight of our rigid casters, deduct 5.4 pounds per item.