

40 SERIES CASTERS

Our 40 Series Casters have been used in a wide variety of industrial caster applications for many years and are the backbone of the Material Handling Industry. The load ratings fit a wide variety of manufacturing and warehousing uses. This medium duty caster series is designed for use on scrap bins, parts boxes, dollies and racks.

FEATURES

Swivel Section
Cold formed top plate, yoke and button are all heat treated to prevent brinelling, improve swivel action and increase service life. Load and thrust bearings are hardened and ground and rotate on hardened raceways. Top plate and legs are 1/4" steel. Legs are formed for increased strength and continuously welded to yoke. All swivel sections are equipped with a lubrication fitting for field maintenance. RWM lubricates all swivel sections prior to shipment. Notched yokes are standard.

Kingpin
5/8" diameter rivet hydraulically compressed to increase strength of swivel section as compared to staking.

Capacity
Up to 1200 lbs.

Axle
1/2" diameter drilled axle with lubrication fitting provided on all casters to improve ease of lubrication

Finish
Zinc plated to protect against corrosion

Wheels
A wide variety of 3" through 6" diameters available with either roller bearing, ball bearing, celcon, oilite or plain bearings.

Mounting Plate Size
4" x 4-1/2" x 1/4"

Bolt Hole Spacing
2-5/8" x 3-5/8", slotted to 3" x 3"

Mounting Bolt Diameter
3/8"

RACEWAY



CROSS-SECTION KINGPIN DIAMETERS



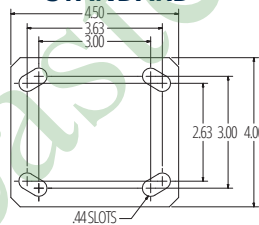
APPLICATIONS

- | | |
|-------------|-------------------|
| Bakeries | Racks |
| Parts boxes | Maintenance carts |
| Scrap bins | |

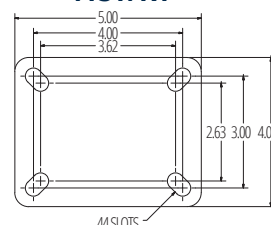


40-GTB-0415-S

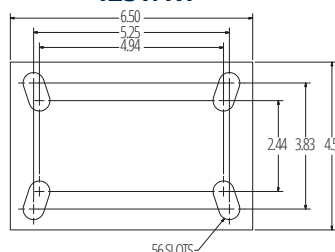
STANDARD



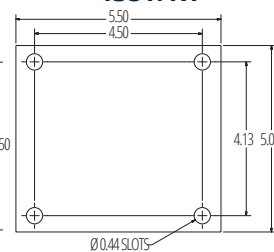
41ST/RT



42ST/RT



43ST/RT



OPTIONS

BRAKES

WB Side Wheel Brake on 4" size and larger (Only available with roller bearings.)

SWIVEL LOCKS

- DSL** Demountable Swivel Lock
- DLSL** Demountable L-Type Swivel Lock
- SL** Swivel Lock

LUBRICATIONS

- HT** High Temperature Lubrication
- LT** Low Temperature Lubrication

ADDITIONAL

- IW** Inside Weld
- KB** Nut and Bolt Kingpin
- NY** Notched Yoke
- SR** Sealed Swivel Raceway
- TG** Thread Guards

CASTERS

KINGPIN

ENGINEERED TO OUTPERFORM

UP TO 1,200 LBS CAPACITY

Wheel Diameter	Wheel Width	Capacity lbs.	Wheel Type	Overall Height	Swivel Caster Model Numbers			Swivel Lead	Approx Weight lbs.
					Roller Bearing	Ball Bearing	Plain Bearing		
3"	1-3/4"	400	Durastan	4-1/2"	40-DUR-0317-S		40-DUC-0317-S	1-3/16"	4
3-1/4"	1-1/2"	400	Cast Iron	4-5/8"	40-CIR-3215-S		40-CIP-3215-S	1-3/16"	5.4
		600	Durastan	4-5/8"	40-DUR-3215-S		40-DUC-3215-S	1-3/16"	5.6
3-5/8"	1-1/2"	420	Urethane on Aluminum	4-13/16"	40-UAR-3515-S		40-UAC-3515-S	1-3/16"	4.3
		200	Soft Rubber	5-5/8"			40-SRO-0415-S	1-3/8"	4.6
		250	Rubber on Iron	5-5/8"	40-RIR-0415-S		40-RIC-0415-S	1-3/8"	6
		300	Urethane Solid	5-5/8"	40-USR-0415-S		40-USC-0415-S	1-3/8"	4.1
		325	Performance TPR	5-5/8"	40-RPR-0415-S	40-RPB-0415-S	40-RPC-0415-S	1-3/8"	4.8
		375	Polyolefin	5-5/8"	40-POR-0415-S	40-POB-0415-S	40-POP-0415-S	1-3/8"	4.1
		400	Hard Rubber	5-5/8"			40-HRO-0415-S	1-3/8"	4.7
		500	Cast Iron	5-5/8"	40-CIR-0415-S	40-CIB-0415-S	40-CIP-0415-S	1-3/8"	5.8
		500	Urethane Polypropylene	5-5/8"	40-UPR-0415-S	40-UPB-0415-S	40-UPC-0415-S	1-3/8"	4.8
		600	Durastan	5-5/8"	40-DUR-0415-S	40-DUB-0415-S	40-DUC-0415-S	1-3/8"	4.4
		600	Urethane on Aluminum	5-5/8"	40-UAR-0415-S		40-UAC-0415-S	1-3/8"	4.4
		600	Urethane on Iron	5-5/8"	40-UIR-0415-S	40-UIB-0415-S	40-UIC-0415-S	1-3/8"	6
		700	V-Groove Iron	5-5/8"	40-VIR-0415-S		40-VIP-0415-S	1-3/8"	6.8
		900	GT	5-5/8"			40-GTB-0415-S	1-3/8"	4.4
1200	Forged Steel	5-5/8"	40-FSR-0415-S		40-FSC-0415-S	1-3/8"	6.5		
1200	Nylatron	5-5/8"			40-NYB-0415-S	1-7/8"	5.6		
5"	1-1/2"	240	Soft Rubber	6-1/8"			40-SRO-0515-S	1-3/8"	5.8
		300	Rubber on Iron	6-1/8"	40-RIR-0515-S		40-RIC-0515-S	1-3/8"	5.4
		330	Urethane Solid	6-1/8"	40-USR-0515-S	40-USB-0515-S	40-USC-0515-S	1-3/8"	6
		350	Performance TPR	6-1/8"	40-RPR-0515-S	40-RPB-0515-S	40-RPC-0515-S	1-3/8"	5.3
		440	Polyolefin	6-1/8"	40-POR-0515-S	40-POB-0515-S	40-POP-0515-S	1-3/8"	4.4
		600	Cast Iron	6-1/8"	40-CIR-0515-S	40-CIB-0515-S	40-CIC-0515-S	1-3/8"	6.7
		650	Durastan	6-1/8"	40-DUR-0515-S	40-DUB-0515-S	40-DUC-0515-S	1-3/8"	4.9
		700	Urethane Polypropylene	6-1/8"	40-UPR-0515-S	40-UPB-0515-S	40-UPC-0515-S	1-3/8"	5.3
		720	Urethane on Aluminum	6-1/8"	40-UAR-0515-S		40-UAC-0515-S	1-3/8"	5
		720	Urethane on Iron	6-1/8"	40-UIR-0515-S	40-UIB-0515-S	40-UIC-0515-S	1-3/8"	5
		1000	GT	6-1/8"			40-GTB-0515-S	1-3/8"	4.9
		1200	Nylatron	6-1/8"			40-NYB-0515-S	1-7/8"	6.1
6"	1-1/2"	370	Rubber on Iron	7-1/4"	40-RIR-0615-S		40-RIC-0615-S	1-5/8"	6.8
		475	Performance TPR	7-1/4"	40-RPR-0615-S	40-RPB-0615-S	40-RPC-0615-S	1-5/8"	5.7
		600	Cast Iron	7-1/4"	40-CIR-0615-S		40-CIP-0615-S	1-5/8"	7.8
		800	Durastan	7-1/4"	40-DUR-0615-S	40-DUB-0615-S	40-DUC-0615-S	1-5/8"	5.4
		800	Urethane Polypropylene	7-1/4"	40-UPR-0615-S	40-UPB-0615-S	40-UPC-0615-S	1-5/8"	5.7
		840	Urethane on Iron	7-1/4"	40-UIR-0615-S	40-UIB-0615-S	40-UIC-0615-S	1-5/8"	7.9
		1200	GT	7-1/4"			40-GTB-0615-S	1-5/8"	5.4
		1200	Nylatron	7-1/4"			40-NYB-0615-S	1-7/8"	7

To order a rigid caster, change the "S" to "R" in the model number. For example: "40-DUR-0317-R". To order a rig only, omit the blue letters. For example: "40-0317-S". Dimensions shown are nominal. If precise dimensions are required, consult your RWM representative. For approximate weight of our rigid casters, deduct 0.5 pounds per item.