

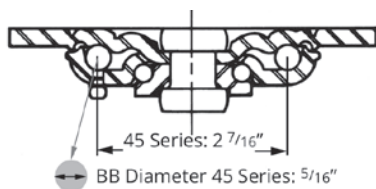
# 45 SERIES CASTERS

The RWM 45 Series Caster is an economical version of our 46 Series industrial caster. These medium duty casters are ideal for bakery, meat processing and many other industries for a wide range of uses including dollies, shop carts, scrap bins and floor trucks.

## FEATURES

Swivel Section	Heat treated double ball raceways secured with a nut & bolt kingpin.
Kingpin	5/8" diameter nut and bolt
Capacity	Up to 1200 lbs.
Axle	1/2" diameter drilled axle with lubrication fitting
Finish	Zinc plated to protect against corrosion
Wheels	A wide variety of 4" through 8" diameters available with straight roller, ball & celcon bearings.
Mounting Plate Size	4" x 4-1/2" x 1/4"
Bolt Hole Spacing	2-5/8" x 3-5/8" slotted to 3" x 3"
Mounting Bolt Diameter	3/8"

## RACEWAY

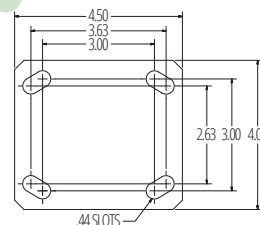


CROSS-SECTION KINGPIN DIAMETERS



45-CIR-0620-S

## STANDARD



## OPTIONS

### BRAKES

<b>ICWB</b>	Installable Face Contact Brake
<b>MICWB</b>	Metal Installable Cam Wheel Brake
<b>STB</b>	Side Tread Brake
<b>WB</b>	Side Wheel Brake (Roller Bearing Only)

### SWIVEL LOCKS

<b>DSL</b>	Demountable Swivel Lock
<b>FOSL</b>	Foot Operated Swivel Lock

### THREAD GUARDS

<b>TG</b>	Thread Guard
-----------	--------------

## APPLICATIONS

Bakery Carts	Shipping/Receiving Carts
Meat Processing	Tire Racks
Assembly Line & Boat Molding Dollies	Housekeeping Carts
Box Trucks	Institutional Equipment
Conveyor Stands and Fixture Carts	Janitorial Equipment
Maintenance & Material Handling Carts	Laboratory Equipment
Mobile Storage Racks & Mobile Tool Chests	Electronic Equipment
Shipping/Receiving Carts	Textile Carts

CASTERS

KINGPIN

ENGINEERED TO OUTPERFORM

UP TO 1,200 LBS CAPACITY

Wheel Diameter	Wheel Width	Capacity lbs.	Wheel Type	Overall Height	Swivel Caster Model Numbers			Swivel Lead	Approx Weight lbs.
					Roller Bearing	Ball Bearing	Plain Bearing		
4"	2"	350	Performance TPR	5-5/8"	45-RPR-0420-S	45-RPB-0420-S	45-RPC-0420-S	1-3/8"	5.3
		350	Rubber on Iron	5-5/8"	45-RIR-0420-S		45-RIC-0420-S	1-3/8"	7.5
		400	Signature Wheel	5-5/8"	45-SWR-0420-S	45-SWB-0420-S	45-SWC-0420-S	1-3/8"	5.5
		500	Polyolefin	5-5/8"	45-POR-0420-S	45-POB-0420-S	45-POC-0420-S	1-3/8"	4.8
		600	Urethane Polypropylene	5-5/8"	45-UPR-0420-S	45-UPB-0420-S	45-UPC-0420-S	1-3/8"	5.3
		700	Rubber on Aluminum	5-5/8"		45-RAB-0420-S-EHT		1-3/8"	7.4
		700	Solid Urethane	5-5/8"		45-MUB-0420-S		1-3/8"	5.5
		700	Urethane on Aluminum	5-5/8"	45-UAR-0420-S		45-UAC-0420-S	1-3/8"	5
		700	Urethane on Iron	5-5/8"	45-UIR-0420-S		45-UIC-0420-S	1-3/8"	6.6
		800	Cast Iron	5-5/8"	45-CIR-0420-S	45-CIB-0420-S	45-CIC-0420-S	1-3/8"	6.5
		800	Durastan	5-5/8"	45-DUR-0420-S	45-DUB-0420-S	45-DUC-0420-S	1-3/8"	5.2
		800	High Temp Nylon	5-5/8"	45-HNR-0420-S			1-3/8"	5.2
		800	Pinnacle Wheel	5-5/8"	45-PNR-0420-S	45-PNB-0420-S	45-PNC-0420-S	1-3/8"	
		800	V-Groove Iron	5-5/8"	45-VIR-0420-S		45-VIC-0420-S	1-3/8"	7.6
		1050	GT	5-5/8"		45-GTB-0420-S		1-3/8"	5.2
		1200	Nylatron HD	5-5/8"		45-NYB-0420-S		1-3/8"	5.7
5"	2"	375	Performance TPR	6-1/2"	45-RPR-0520-S	45-RPB-0520-S	45-RPC-0520-S	1-5/8"	5.3
		400	Rubber on Iron	6-1/2"	45-RIR-0520-S		45-RIC-0520-S	1-5/8"	7.6
		500	Signature Wheel	6-1/2"	45-SWR-0520-S	45-SWB-0520-S	45-SWC-0520-S	1-5/8"	5.7
		650	Polyolefin	6-1/2"	45-POR-0520-S	45-POB-0520-S	45-POC-0520-S	1-5/8"	4.6
		750	Urethane Polypropylene	6-1/2"	45-UPR-0520-S	45-UPB-0520-S	45-UPC-0520-S	1-5/8"	5.3
		800	Rubber on Aluminum	6-1/2"		45-RAB-0520-S-EHT		1-5/8"	7.5
		800	V-Groove Iron	6-1/2"	45-VIR-0520-S		45-VIC-0520-S	1-5/8"	9.9
		1000	Cast Iron	6-1/2"	45-CIR-0520-S	45-CIB-0520-S	45-CIC-0520-S	1-5/8"	7.8
		1000	Durastan	6-1/2"	45-DUR-0520-S	45-DUB-0520-S	45-DUC-0520-S	1-5/8"	5.4
		1000	High Temp Nylon	6-1/2"	45-HNR-0520-S			1-5/8"	5.4
		1000	Pinnacle Wheel	6-1/2"	45-PNR-0520-S	45-PNB-0520-S	45-PNC-0520-S	1-5/8"	5.6
		1000	Solid Urethane	6-1/2"		45-MUB-0520-S		1-5/8"	5.7
		1050	Urethane on Aluminum	6-1/2"	45-UAR-0520-S		45-UAC-0520-S	1-5/8"	7.7
		1050	Urethane on Iron	6-1/2"	45-UIR-0520-S		45-UIC-0520-S	1-5/8"	7.7
		1200	Forged Steel	6-1/2"	45-FSR-0520-S		45-FSC-0520-S	1-5/8"	8.1
		1200	GT	6-1/2"		45-GTB-0520-S		1-5/8"	5.4
1200	Nylatron HD	6-1/2"		45-NYB-0520-S		1-5/8"	5.9		
6"	2"	410	Rubber on Iron	7-1/2"	45-RIR-0620-S		45-RIC-0620-S	1-13/16"	7.8
		525	Performance TPR	7-1/2"	45-RPR-0620-S	45-RPB-0620-S	45-RPC-0620-S	1-13/16"	5.7
		600	Signature Wheel	7-1/2"	45-SWR-0620-S	45-SWB-0620-S	45-SWC-0620-S	1-13/16"	6.4
		700	Polyolefin	7-1/2"	45-POR-0620-S	45-POB-0620-S	45-POC-0620-S	1-13/16"	5
		820	Rubber on Aluminum	7-1/2"		45-RAB-0620-S-EHT		1-13/16"	7.8
		900	Urethane Polypropylene	7-1/2"	45-UPR-0620-S	45-UPB-0620-S	45-UPC-0620-S	1-13/16"	5.7
		1000	Omega	7-1/2"	45-UOR-0620-S	45-UOB-0620-S		1-13/16"	8.8
		1000	V-Groove Iron	7-1/2"	45-VIR-0620-S		45-VIC-0620-S	1-13/16"	10.9
		1200	Cast Iron	7-1/2"	45-CIR-0620-S	45-CIB-0620-S	45-CIC-0620-S	1-13/16"	9.1
		1200	Durastan	7-1/2"	45-DUR-0620-S	45-DUB-0620-S	45-DUC-0620-S	1-13/16"	6.3
		1200	Forged Steel	7-1/2"	45-FSR-0620-S		45-FSC-0620-S	1-13/16"	10
		1200	GT	7-1/2"		45-GTB-0620-S		1-13/16"	6.3
		1200	High Temp Nylon	7-1/2"	45-HNR-0620-S			1-13/16"	6.3
		1200	Pinnacle Wheel	7-1/2"	45-PNR-0620-S	45-PNB-0620-S	45-PNC-0620-S	1-13/16"	6.2
		1200	Solid Urethane	7-1/2"		45-MUB-0620-S		1-13/16"	6.4
		1200	Torus	7-1/2"		45-UAB-0621-S		1-13/16"	6.1
1200	Urethane on Aluminum	7-1/2"	45-UAR-0620-S		45-UAC-0620-S	1-13/16"	6.1		
1200	Urethane on Iron	7-1/2"	45-UIR-0620-S		45-UIC-0620-S	1-13/16"	8.8		
8"	2"	500	Rubber on Iron	9-1/2"	45-RIR-0820-S		45-RIC-0820-S	2-3/16"	10.1
		600	Performance TPR	9-1/2"	45-RPR-0820-S	45-RPB-0820-S	45-RPC-0820-S	2-3/16"	7.1
		700	Signature Wheel	9-1/2"	45-SWR-0820-S	45-SWB-0820-S	45-SWC-0820-S	2-3/16"	7.1
		800	Polyolefin	9-1/2"	45-POR-0820-S	45-POB-0820-S	45-POC-0820-S	2-3/16"	5.8
		1000	Rubber on Aluminum	9-1/2"		45-RAB-0820-S-EHT		2-3/16"	10.1
		1000	Urethane Polypropylene	9-1/2"	45-UPR-0820-S	45-UPB-0820-S	45-UPC-0820-S	2-3/16"	7.7
		1050	V-Groove Iron	9-1/2"	45-VIR-0820-S		45-VIC-0820-S	2-3/16"	15.3
		1200	Cast Iron	9-1/2"	45-CIR-0820-S	45-CIB-0820-S	45-CIC-0820-S	2-3/16"	13.3
		1200	Durastan	9-1/2"	45-DUR-0820-S	45-DUB-0820-S	45-DUC-0820-S	2-3/16"	7.7
		1200	GT	9-1/2"		45-GTB-0820-S		2-3/16"	7.7
		1200	Omega	9-1/2"	45-UOR-0820-S	45-UOB-0820-S		2-3/16"	12.1
		1200	Pinnacle Wheel	9-1/2"	45-PNR-0820-S	45-PNB-0820-S	45-PNC-0820-S	2-3/16"	6.9
		1200	Solid Urethane	9-1/2"		45-MUB-0820-S		2-3/16"	7.1
		1200	Torus	9-1/2"		45-UAB-0821-S		2-3/16"	7.3
		1200	Urethane on Aluminum	9-1/2"	45-UAR-0820-S		45-UAC-0820-S	2-3/16"	7.3
		1200	Urethane on Iron	9-1/2"	45-UIR-0820-S		45-UIC-0820-S	2-3/16"	12.1