

46 SERIES CASTERS

CASTERS

KINGPIN

ENGINEERED TO OUTPERFORM

UP TO 1,200 LBS CAPACITY

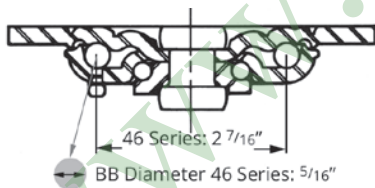
The 46 Series Casters are designed for medium heavy duty industrial caster applications. Medium Heavy-Duty Casters are the backbone of Material Handling Industry. Nearly every warehouse, freight terminal, manufacturing plant and industrial business use these types of casters in their operations.

FEATURES

Swivel Section
Cold formed top plate, yoke and button are all heat treated to prevent brinelling, improve swivel action and increase service life. Load and thrust bearings are hardened and ground and rotate on hardened raceways. Top plate and legs are 1/4" steel, legs formed for increased strength and inside and out continuously welded to yoke. All swivel sections are equipped with a lubrication fitting for field maintenance. RWM lubricates all swivel sections prior to shipment. Notched yokes are standard.

Capacity	Up to 1200 lbs.
Kingpin	5/8" diameter rivet hydraulically compressed to increase strength of swivel section as compared to staking
Axle	1/2" diameter drilled axle with lubrication fitting provided on all casters to improve ease of lubrication
Finish	Zinc plated to protect from corrosion
Wheels	A wide variety of 3-1/4" through 8" diameters available with either roller, ball bearing, celcon or plain bearings.
Mounting Plate Size	4" x 4-1/2" x 1/4"
Bolt Hole Spacing	2-5/8" x 3-5/8" slotted to 3" x 3"
Mounting Bolt Diameter	3/8"

RACEWAY



CROSS-SECTION KINGPIN DIAMETERS



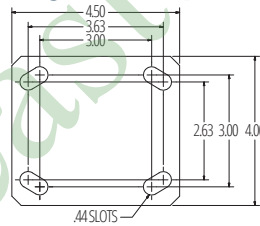
APPLICATIONS

Platform trucks	Shelf trucks
Material handling carts	Ground support equipment
Vending machines	Bakery carts
Warehouse and factory applications	A-frame trucks
Heavy-duty food service and industrial equipment	Assembly line dollies
Tool boxes	Maintenance carts
Stock carts	Mobile storage racks

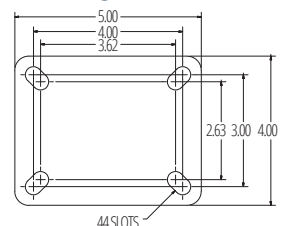


46-RAB-0620-S

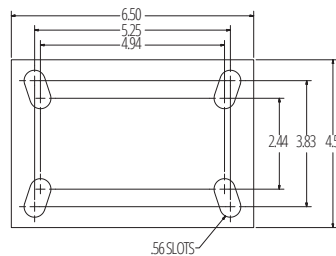
STANDARD



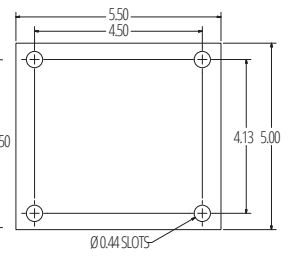
41ST/RT



42ST/RT



43ST/RT



OPTIONS

BRAKES

ICWB	Installable Face Contact Brake
FCNB	Face Contact Nylon Brake
FCNTLB	Face Contact Nylon Total Lock Brake
FCSTLB	Face Contact Street Total Lock Brake
MICWB	Metal Installable Cam Wheel Brake
WB	Field Installable Side Wheel Brake on 4" and larger (Roller Bearings Only)
WBT	Tread Wheel Brake

SWIVEL LOCKS

DSL	Demountable Swivel Lock
DLSL	Demountable L-Type Swivel Lock
SL	Swivel Lock
FOSL	Foot Operated Swivel Lock

LUBRICATIONS

HT	High Temperature Lubrication
LT	Low Temperature Lubrication

RACEWAY, GUARDS AND SEALS

SR	Sealed Swivel Raceway
TG	Thread Guards
FG	Foot Guard
WS	Wheel Seals

Wheel Diameter	Wheel Width	Capacity lbs.	Wheel Type	Overall Height	Swivel Caster Model Numbers			Swivel Lead	Approx Weight lbs.
					Roller Bearing	Ball Bearing	Plain Bearing		
3-1/4"	2"	400	Durastan	5-1/4"	46-DUR-3220-S		46-DUC-3220-S	1-7/16"	6.7
4"	1-1/2"	1200	Forged Steel	5-5/8"	46-FSR-0415-S		46-FSC-0415-S	1-3/8"	7
4"	2"	350	Performance TPR	5-5/8"	46-RPR-0420-S	46-RPB-0420-S	46-RPC-0420-S	1-3/8"	5.3
		350	Rubber on Iron	5-5/8"	46-RIR-0420-S		46-RIC-0420-S	1-3/8"	7.5
		400	Signature	5-5/8"	46-SWR-0420-S	46-SWB-0420-S	46-SWC-0420-S	1-3/8"	5.5
		500	Polyolefin	5-5/8"	46-POR-0420-S	46-POB-0420-S	46-POC-0420-S	1-3/8"	4.8
		600	Urethane Polypropylene	5-5/8"	46-UPR-0420-S	46-UPB-0420-S	46-UPC-0420-S	1-3/8"	5.3
		700	Rubber on Aluminum	5-5/8"		46-RAB-0420-S-EHT		1-3/8"	7.4
		700	Solid Urethane	5-5/8"		46-MUB-0420-S		1-3/8"	5.5
		700	Urethane on Aluminum	5-5/8"	46-UAR-0420-S		46-UAC-0420-S	1-3/8"	5
		700	Urethane on Iron	5-5/8"	46-UIR-0420-S		46-UIC-0420-S	1-3/8"	6.6
		800	Cast Iron	5-5/8"	46-CIR-0420-S	46-CIB-0420-S	46-CIC-0420-S	1-3/8"	6.5
		800	Durastan	5-5/8"	46-DUR-0420-S	46-DUB-0420-S	46-DUC-0420-S	1-3/8"	5.2
		800	High Temp Nylon	5-5/8"	46-HNR-0420-S			1-3/8"	5.2
		800	Pinnacle	5-5/8"	46-PNR-0420-S	46-PNB-0420-S	46-PNC-0420-S	1-3/8"	5.2
		800	V-Groove Iron	5-5/8"	46-VIR-0420-S		46-VIC-0420-S	1-3/8"	7.6
		1050	GT	5-5/8"		46-GTB-0420-S		1-3/8"	5.2
		1200	Nylatron HD	5-5/8"		46-NYB-0420-S		1-3/8"	5.7
5"	2"	375	Performance TPR	6-1/2"	46-RPR-0520-S	46-RPB-0520-S	46-RPC-0520-S	1-11/16"	5.3
		400	Rubber on Iron	6-1/2"	46-RIR-0520-S		46-RIC-0520-S	1-11/16"	7.6
		500	Signature	6-1/2"	46-SWR-0520-S	46-SWB-0520-S	46-SWC-0520-S	1-11/16"	5.7
		650	Polyolefin	6-1/2"	46-POR-0520-S	46-POB-0520-S	46-POC-0520-S	1-11/16"	4.6
		750	Urethane Polypropylene	6-1/2"	46-UPR-0520-S	46-UPB-0520-S	46-UPC-0520-S	1-11/16"	5.3
		800	Rubber on Aluminum	6-1/2"		46-RAB-0520-S-EHT		1-11/16"	7.5
		800	V-Groove Iron	6-1/2"	46-VIR-0520-S		46-VIC-0520-S	1-11/16"	9.9
		1000	Cast Iron	6-1/2"	46-CIR-0520-S	46-CIB-0520-S	46-CIC-0520-S	1-11/16"	7.8
		1000	Durastan	6-1/2"	46-DUR-0520-S	46-DUB-0520-S	46-DUC-0520-S	1-11/16"	5.4
		1000	High Temp Nylon	6-1/2"	46-HNR-0520-S			1-11/16"	5.4
		1000	Pinnacle	6-1/2"	46-PNR-0520-S	46-PNB-0520-S	46-PNC-0520-S	1-11/16"	5.6
		1000	Solid Urethane	6-1/2"		46-MUB-0520-S		1-11/16"	5.7
		1050	Urethane on Aluminum	6-1/2"	46-UAR-0520-S		46-UAC-0520-S	1-11/16"	5.5
		1050	Urethane on Iron	6-1/2"	46-UIR-0520-S		46-UIC-0520-S	1-11/16"	7.7
		1200	Forged Steel	6-1/2"	46-FSR-0520-S		46-FSC-0520-S	1-11/16"	8.1
		1200	GT	6-1/2"		46-GTB-0520-S		1-11/16"	5.4
1200	Nylatron HD	6-1/2"		46-NYB-0520-S		1-11/16"	5.9		
6"	2"	410	Rubber on Iron	7-1/2"	46-RIR-0620-S		46-RIC-0620-S	2"	7.8
		525	Performance TPR	7-1/2"	46-RPR-0620-S	46-RPB-0620-S	46-RPC-0620-S	2"	5.7
		600	Signature	7-1/2"	46-SWR-0620-S	46-SWB-0620-S	46-SWC-0620-S	2"	6.4
		700	Polyolefin	7-1/2"	46-POR-0620-S	46-POB-0620-S	46-POC-0620-S	2"	5
		820	Rubber on Aluminum	7-1/2"		46-RAB-0620-S-EHT		2"	7.8
		900	Urethane Polypropylene	7-1/2"	46-UPR-0620-S	46-UPB-0620-S	46-UPC-0620-S	2"	5.7
		1000	Omega	7-1/2"	46-UOR-0620-S	46-UOB-0620-S		2"	8.8
		1000	V-Groove Iron	7-1/2"	46-VIR-0620-S		46-VIC-0620-S	2"	10.9
		1200	Cast Iron	7-1/2"	46-CIR-0620-S	46-CIB-0620-S	46-CIC-0620-S	2"	9.1
		1200	Durastan	7-1/2"	46-DUR-0620-S	46-DUB-0620-S	46-DUC-0620-S	2"	6.3
		1200	Forged Steel	7-1/2"	46-FSR-0620-S		46-FSC-0620-S	2"	10
		1200	GT	7-1/2"		46-GTB-0620-S		2"	6.3
		1200	High Temp Nylon	7-1/2"	46-HNR-0620-S			2"	6.3
		1200	Pinnacle	7-1/2"	46-PNR-0620-S	46-PNB-0620-S	46-PNC-0620-S	2"	6.2
		1200	Solid Urethane	7-1/2"		46-MUB-0620-S		2"	6.4
		1200	Torus	7-1/2"		46-UAB-0621-S		2"	6.1
1200	Urethane on Aluminum	7-1/2"	46-UAR-0620-S		46-UAC-0620-S	2"	6.1		
1200	Urethane on Iron	7-1/2"	46-UIR-0620-S	46-UIB-0620-S	46-UIC-0620-S	2"	8.8		
8"	2"	500	Rubber on Iron	9-1/2"	46-RIR-0820-S		46-RIC-0820-S	2-3/8"	10.1
		600	Performance TPR	9-1/2"	46-RPR-0820-S	46-RPB-0820-S	46-RPC-0820-S	2-3/8"	7.1
		700	Signature	9-1/2"	46-SWR-0820-S	46-SWB-0820-S	46-SWC-0820-S	2-3/8"	7.1
		800	Polyolefin	9-1/2"	46-POR-0820-S	46-POB-0820-S	46-POC-0820-S	2-3/8"	5.8
		1000	Rubber on Aluminum	9-1/2"		46-RAB-0820-S-EHT		2-3/8"	10.1
		1000	Urethane Polypropylene	9-1/2"	46-UPR-0820-S	46-UPB-0820-S	46-UPC-0820-S	2-3/8"	7.7
		1050	V-Groove Iron	9-1/2"	46-VIR-0820-S		46-VIC-0820-S	2-3/8"	15.3
		1200	Cast Iron	9-1/2"	46-CIR-0820-S	46-CIB-0820-S	46-CIC-0820-S	2-3/8"	13.3
		1200	Durastan	9-1/2"	46-DUR-0820-S	46-DUB-0820-S	46-DUC-0820-S	2-3/8"	7.7
		1200	GT	9-1/2"		46-GTB-0820-S		2-3/8"	7.7
		1200	Omega	9-1/2"	46-UOR-0820-S	46-UOB-0820-S		2-3/8"	12.1
		1200	Pinnacle	9-1/2"	46-PNR-0820-S		46-PNC-0620-S	2-3/8"	6.9
		1200	Solid Urethane	9-1/2"		46-MUB-0820-S		2-3/8"	7.1
		1200	Torus	9-1/2"		46-UAB-0821-S		2-3/8"	7.3
		1200	Urethane on Aluminum	9-1/2"	46-UAR-0820-S		46-UAC-0820-S	2-3/8"	7.3
		1200	Urethane on Iron	9-1/2"	46-UIR-0820-S	46-UIB-0820-S	46-UIC-0820-S	2-3/8"	12.1

To order a rigid caster, change the "S" to "R" in the model number. For example: "46-DUR-3220-R". To order a rig only, omit the blue letters. For example: "46-3220-S". Dimensions shown are nominal. If precise dimensions are required, consult your RWM representative. For approximate weight of our rigid casters, deduct 0.9 pounds per item.