

# 47 SERIES CASTERS

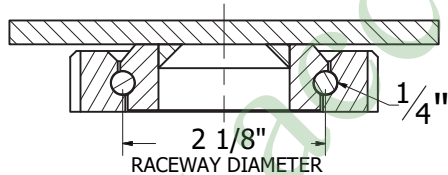
RWM Casters manufactures the 47 Series as our lightest duty Kingpinless™ caster series. The 47 Series caster is excellent in demanding applications requiring a product that will withstand shock, continuous use and abusive conditions. This medium duty series features our patented offset raceway for additional strength and is proudly Made in the U.S.A.



## FEATURES

<b>Raceway Design</b>	Patented Kingpinless™ single ball bearing precision-machined raceway hardened to 53 Rockwell C. minimum. Swivel section features 2 1/8" diameter raceway with 1/4" ball bearings.
<b>Capacity</b>	Up to 1500 lbs.
<b>Swivel Section</b>	All swivel sections are supplied with a lubrication fitting for field maintenance. Notched yokes are standard.
<b>Leg Thickness</b>	1/4" formed steel.
<b>Axle</b>	1/2" bolt and locking nut drilled with lube fitting.
<b>Finish</b>	Zinc plated to protect against corrosion.
<b>Mounting Plate Size</b>	4"x4-1/2"x1/4"
<b>Bolt Hole Spacing</b>	2-5/8"x3-5/8" slotted to 3"x3"
<b>Mounting Bolt Diameter</b>	3/8"

## KINGPINLESS RACEWAY



## APPLICATIONS

Assembly lines	Ground support equipment
Boat and ship building	Warehousing carts
Automotive	Handling carts
Aerospace	Machinery
Metal fabricating	

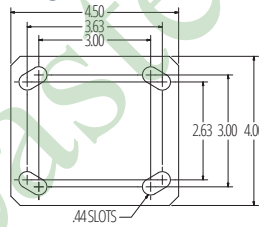
## OPTIONAL OVERALL HEIGHTS

WHEEL DIAMETER	OVERALL HEIGHT
4"	5-9/16"
5"	6-11/16"
6"	7-1/4"
8"	10-1/8"

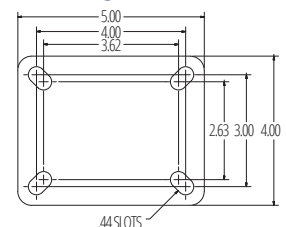
\* WB and WWB with roller bearing only.

47-SWB-0620-S

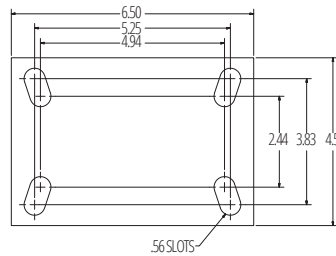
### STANDARD



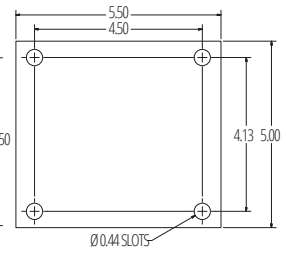
### 41ST/RT



### 42ST/RT



### 43ST/RT



## OPTIONS

### BRAKES

- CWB** Cam Wheel Brake
- ICWB** Installable Face Contact Brake
- MICWB** Metal Installable Cam Wheel Brake
- \*WB** Side Wheel Break with Roller Bearing only
- \*WWB** Wraparound Wheel Brake

### SWIVEL LOCKS

- DSL** Demountable Swivel Lock
- DLSL** Demountable L-Handle Lock
- FOSL** Foot Operated Swivel Lock
- SL** Swivel Lock

### LUBRICATIONS

- HT** High Temperature Lubrication
- LT** Low Temperature Lubrication

### GUARDS AND SEALS

- FIFG** Field Installable Foot Guard
- FG** Foot Guard
- TG** Thread Guards
- WS** Wheel Seals

### FINISHES

- HTP** High Temperature Paint

CASTERS

KINGPINLESS

ENGINEERED TO OUTPERFORM

UP TO 1,500 LBS CAPACITY

Wheel Diameter	Wheel Width	Capacity lbs.	Wheel Type	Overall Height	Swivel Caster Model Numbers			Swivel Lead	Approx Weight lbs.		
					Roller Bearing	Ball Bearing	Plain Bearing				
4"	2"	350	Performance TPR	5-5/8"	47-RPR-0420-S	47-RPB-0420-S	47-RPC-0420-S	1-3/8"	5.3		
		350	Rubber on Iron	5-5/8"	47-RIR-0420-S		47-RIC-0420-S	1-3/8"	7.5		
		400	Signature	5-5/8"	47-SWR-0420-S	47-SWB-0420-S	47-SWC-0420-S	1-3/8"	5.5		
		500	Polyolefin	5-5/8"	47-POR-0420-S	47-POB-0420-S	47-POC-0420-S	1-3/8"	4.8		
		600	Urethane Polypropylene	5-5/8"	47-UPR-0420-S	47-UPB-0420-S	47-UPC-0420-S	1-3/8"	5.3		
		700	Urethane on Aluminum	5-5/8"	47-UAR-0420-S		47-UAC-0420-S	1-3/8"	5		
		700	Solid Urethane	5-5/8"		47-MUB-0420-S		1-3/8"	5.5		
		700	Urethane on Iron	5-5/8"	47-UIR-0420-S		47-UIC-0420-S	1-3/8"	6.6		
		700	Rubber on Aluminum	5-5/8"		47-RAB-0420-S-EHT		1-3/8"	7.4		
		800	Durastan	5-5/8"	47-DUR-0420-S	47-DUB-0420-S	47-DUC-0420-S	1-3/8"	5.2		
		800	High Temp. Nylon	5-5/8"	47-HNR-0420-S			1-3/8"	5.2		
		800	Pinnacle	5-5/8"	47-PNR-0420-S	47-PNB-0420-S	47-PNC-0420-S	1-3/8"	5.2		
		800	Cast Iron	5-5/8"	47-CIR-0420-S	47-CIB-0420-S	47-CIC-0420-S	1-3/8"	6.5		
		800	V-Groove Iron	5-5/8"	47-VIR-0420-S		47-VIC-0420-S	1-3/8"	7.6		
		1500	GT	5-5/8"		47-GTB-0420-S		1-3/8"	5		
		1500	Nytralon HD	5-5/8"		47-NYB-0420-S		1-3/8"	5.5		
		5"	2"	375	Performance TPR	6-1/2"	47-RPR-0520-S	47-RPB-0520-S	47-RPC-0520-S	1-1/2"	5.3
				400	Rubber on Iron	6-1/2"	47-RIR-0520-S		47-RIC-0520-S	1-1/2"	7.6
500	Signature			6-1/2"	47-SWR-0520-S	47-SWB-0520-S	47-SWC-0520-S	1-1/2"	5.7		
650	Polyolefin			6-1/2"	47-POR-0520-S	47-POB-0520-S	47-POC-0520-S	1-1/2"	4.6		
750	Urethane Polypropylene			6-1/2"	47-UPR-0520-S	47-UPB-0520-S	47-UPC-0520-S	1-1/2"	5.3		
800	Rubber on Aluminum			6-1/2"		47-RAB-0520-S-EHT		1-1/2"	7.5		
800	V-Groove Iron			6-1/2"	47-VIR-0520-S		47-VIC-0520-S	1-1/2"	9.9		
1000	Durastan			6-1/2"	47-DUR-0520-S	47-DUB-0520-S	47-DUC-0520-S	1-1/2"	5.4		
1000	High Temp. Nylon			6-1/2"	47-HNR-0520-S			1-1/2"	5.4		
1000	Pinnacle			6-1/2"	47-PNR-0520-S	47-PNB-0520-S	47-PNC-0520-S	1-1/2"	5.6		
1000	Cast Iron			6-1/2"	47-CIR-0520-S	47-CIB-0520-S	47-CIC-0520-S	1-1/2"	7.8		
1000	Solid Urethane			6-1/2"		47-MUB-0520-S		1-1/2"	5.7		
1050	Urethane on Aluminum			6-1/2"	47-UAR-0520-S		47-UAC-0520-S	1-1/2"	5.5		
1050	Urethane on Iron			6-1/2"	47-UIR-0520-S		47-UIC-0520-S	1-1/2"	7.7		
1200	GT			6-1/2"		47-GTB-0520-S		1-1/2"	6		
1500	Forged Steel	6-1/2"	47-FSR-0520-S		47-FSC-0520-S	1-1/2"	8.1				
1500	Nytralon HD	6-1/2"		47-NYB-0520-S		1-1/2"	6.5				
6"	2"	410	Rubber on Iron	7-1/2"	47-RIR-0620-S		47-RIC-0620-S	1-3/4"	7.8		
		525	Performance TPR	7-1/2"	47-RPR-0620-S	47-RPB-0620-S	47-RPC-0620-S	1-3/4"	5.7		
		600	Signature	7-1/2"	47-SWR-0620-S	47-SWB-0620-S	47-SWC-0620-S	1-3/4"	6.4		
		700	Polyolefin	7-1/2"	47-POR-0620-S	47-POB-0620-S	47-POC-0620-S	1-3/4"	5		
		820	Rubber on Aluminum	7-1/2"		47-RAB-0620-S-EHT		1-3/4"	7.8		
		900	Urethane Polypropylene	7-1/2"	47-UPR-0620-S	47-UPB-0620-S	47-UPC-0620-S	1-3/4"	5.7		
		1000	Omega	7-1/2"	47-UOR-0620-S	47-UOB-0620-S		1-3/4"	8.8		
		1000	V-Groove Iron	7-1/2"	47-VIR-0620-S		47-VIC-0620-S	1-3/4"	10.9		
		1200	Durastan	7-1/2"	47-DUR-0620-S	47-DUB-0620-S	47-DUC-0620-S	1-3/4"	6.3		
		1200	High Temp. Nylon	7-1/2"	47-HNR-0620-S			1-3/4"	6.3		
		1200	Pinnacle	7-1/2"	47-PNR-0620-S	47-PNB-0620-S	47-PNC-0620-S	1-3/4"	6.2		
		1200	Cast Iron	7-1/2"	47-CIR-0620-S	47-CIB-0620-S	47-CIC-0620-S	1-3/4"	9.1		
		1200	Solid Urethane	7-1/2"		47-MUB-0620-S		1-3/4"	6.4		
		1230	Torus	7-1/2"		47-UAB-0621-S		1-3/4"	7		
		1230	Urethane on Aluminum	7-1/2"	47-UAR-0620-S		47-UAC-0620-S	1-3/4"	6.3		
		1230	Urethane on Iron	7-1/2"	47-UIR-0620-S	47-UIB-0620-S	47-UIC-0620-S	1-3/4"	8.8		
		1500	GT	7-1/2"		47-GTB-0620-S		1-3/4"	8		
		1500	Forged Steel	7-1/2"	47-FSR-0620-S		47-FSC-0620-S	1-3/4"	10		
8"	2"	500	Rubber on Iron	9-1/2"	47-RIR-0820-S		47-RIC-0820-S	2-1/8"	10.2		
		600	Performance TPR	9-1/2"	47-RPR-0820-S	47-RPB-0820-S	47-RPC-0820-S	2-1/8"	7.7		
		700	Signature	9-1/2"	47-SWR-0820-S	47-SWB-0820-S	47-SWC-0820-S	2-1/8"	7.1		
		800	Polyolefin	9-1/2"	47-POR-0820-S	47-POB-0820-S	47-POC-0820-S	2-1/8"	5.8		
		1000	Rubber on Aluminum	9-1/2"		47-RAB-0820-S-EHT		2-1/8"	10.1		
		1000	Urethane Polypropylene	9-1/2"	47-UPR-0820-S	47-UPB-0820-S	47-UPC-0820-S	2-1/8"	7.7		
		1200	Omega	9-1/2"	47-UOR-0820-S	47-UOB-0820-S		2-1/8"	12.2		
		1400	Pinnacle	9-1/2"	47-PNR-0820-S	47-PNB-0820-S	47-PNC-0820-S	2-1/8"	6.9		
		1400	Durastan	9-1/2"	47-DUR-0820-S	47-DUB-0820-S	47-DUC-0820-S	2-1/8"	7.7		
		1400	Cast Iron	9-1/2"	47-CIR-0820-S	47-CIB-0820-S	47-CIC-0820-S	2-1/8"	13.3		
		1500	Torus	9-1/2"		47-UAB-0821-S		2-1/8"	7		
		1500	Solid Urethane	9-1/2"		47-MUB-0820-S		2-1/8"	7.1		
		1500	Urethane on Aluminum	9-1/2"	47-UAR-0820-S		47-UAC-0820-S	2-1/8"	7.3		
		1500	Urethane on Iron	9-1/2"	47-UIR-0820-S	47-UIB-0820-S	47-UIC-0820-S	2-1/8"	12.1		
		1500	GT	9-1/2"		47-GTB-0820-S		2-1/8"	12.2		

For a rigid caster, change the "S" to "R" in the model number. For example, "47-UPB-0520-R." To order rig only, omit the blue letters. For example, "47-0520-S." For approximate weight of a rigid caster, deduct .7 pounds. Dimensions shown are nominal. If precise dimensions are required, please consult your RWM representative.