

# 65 SERIES CASTERS

CASTERS

KINGPINLESS

ENGINEERED TO OUTPERFORM

RWM Casters 65 Series industrial casters feature the original and time-tested, patented Kingpinless™ caster design. RWM patented this design, which has proven the best solution for demanding applications such as automotive towlines, assembly lines, and various heavy duty industrial applications. This is the Kingpinless™ caster design that all others are copying because it is simply unmatched in extending service life and reducing all possible causes for caster failure. Our 65 series casters are proudly made in the USA. If our standard product does not meet your specifications, custom caster design and production for application-specific standards is our specialty.

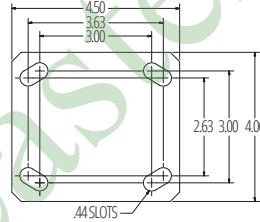


## FEATURES

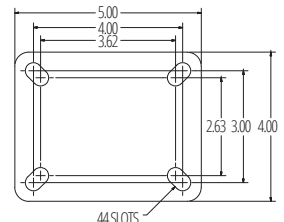
<b>Raceway Design</b>	Patented Kingpinless™ single ball bearing precision-machined raceway hardened to 53 Rockwell C. minimum. Swivel section features 2-3/8" diameter raceway with 3/8" ball bearings.
<b>Capacity</b>	Up to 2000 lbs.
<b>Swivel Section</b>	All swivel sections are supplied with a lubrication fitting for field maintenance.
<b>Leg Thickness</b>	1/4" formed steel.
<b>Axle</b>	1/2" bolt and locking nut drilled with lube fitting.
<b>Finish</b>	Zinc plated to protect against corrosion.
<b>Mounting Plate Size</b>	4"x4-1/2"x1/4"
<b>Bolt Hole Spacing</b>	2-5/8"x3-5/8" slotted to 3"x3"
<b>Mounting Bolt Diameter</b>	3/8"

65-UOR-0820-S

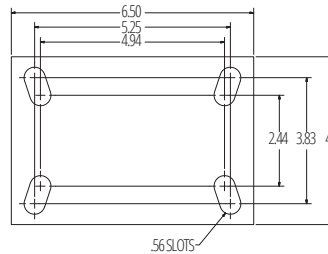
### STANDARD



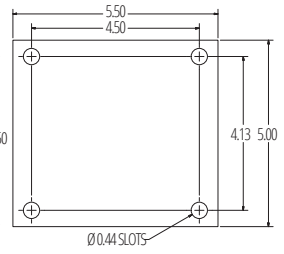
### 41ST/RT



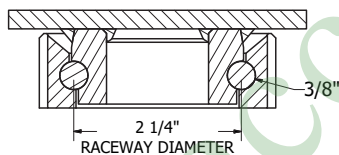
### 42ST/RT



### 43ST/RT



## KINGPINLESS RACEWAY



## OPTIONS

### BRAKES

ICWB	Installable Face Contact Brake
MICWB	Metal Installable Cam Wheel Brake
*WB	Side Wheel Brake
*WWB	Wraparound Wheel Brake
CWB	Cam Wheel Brake

### SWIVEL LOCKS

DSL	Demountable Swivel Lock
DLSL	Demountable L-Handle Lock
SL	Swivel Lock
FOSL	Foot Operated Swivel Lock
LP	Locking Plate-Total Lock for 8" Casters Only

### LUBRICATIONS

HT	High Temperature Lubrication
LT	Low Temperature Lubrication

### GUARDS, SEALS, FINISHES

TG	Thread Guards
WS	Wheel Seals
FIFG	Field Installable Foot Guard
FG	Foot Guard
SR	Sealed Raceway
HTP	High Temperature Paint

\* WB and WWB with roller bearing only.

## APPLICATIONS

- Aircraft maintenance and support applications
- Towing applications
- Automotive assembly lines
- Heavy duty industrial applications
- Manufacturing applications

## OPTIONAL OVERALL HEIGHTS

Wheel Diameter	Overall Height
4"	5-9/16"
5"	6-11/16"
6"	7-5/8"
8"	9-1/2"

UP TO 2,000 LBS CAPACITY

Wheel Diameter	Wheel Width	Capacity lbs.	Wheel Type	Overall Height	Swivel Caster Model Numbers			Swivel Lead	Approx Weight lbs.	
					Roller Bearing	Ball Bearing	Plain Bearing			
4"	1-1/2"	1400	Forged Steel	5-5/8"	65-FSR-0415-S		65-FSC-0415-S	1-3/16"	9	
		350	Performance TPR	5-5/8"	65-RPR-0420-S	65-RPB-0420-S	65-RPC-0420-S	1-3/16"	7.3	
		350	Rubber on Iron	5-5/8"	65-RIR-0420-S		65-RIC-0420-S	1-3/16"	8	
		400	Signature	5-5/8"	65-SWR-0420-S	65-SWB-0420-S	65-SWC-0420-S	1-3/16"	7	
		500	Polyolefin	5-5/8"	65-POR-0420-S	65-POB-0420-S	65-POC-0420-S	1-3/16"	7.6	
		600	Urethane Polypropylene	5-5/8"	65-UPR-0420-S	65-UPB-0420-S	65-UPC-0420-S	1-3/16"	7.3	
		700	Rubber on Aluminum	5-5/8"		65-RAB-0420-S-EHT		1-3/16"	8	
		700	Solid Urethane	5-5/8"		65-MUB-0420-S		1-3/16"	7	
		700	Urethane on Aluminum	5-5/8"	65-UAR-0420-S		65-UAC-0420-S	1-3/16"	7.5	
		700	Urethane on Iron	5-5/8"	65-UIR-0420-S		65-UIC-0420-S	1-3/16"	8	
	4"	2"	800	Cast Iron	5-5/8"	65-CIR-0420-S	65-CIB-0420-S	65-CIC-0420-S	1-3/16"	10
			800	Durastan	5-5/8"	65-DUR-0420-S	65-DUB-0420-S	65-DUC-0420-S	1-3/16"	8
			800	High Temp. Nylon	5-5/8"	65-HNR-0420-S			1-3/16"	8
			800	Pinnacle	5-5/8"	65-PNR-0420-S	65-PNB-0420-S	65-PNC-0420-S	1-3/16"	8
			800	V-Groove Iron	5-5/8"	65-VIR-0420-S		65-VIC-0420-S	1-3/16"	10
			1050	GT	5-5/8"		65-GTB-0420-S		1-3/16"	8
			2000	Nylatron HD	5-5/8"		65-NYB-0420-S		1-3/16"	8.5
			375	Performance TPR	6-1/2"	65-RPR-0520-S	65-RPB-0520-S	65-RPC-0520-S	1-3/8"	7.3
			400	Rubber on Iron	6-1/2"	65-RIR-0520-S		65-RIC-0520-S	1-3/8"	9
			500	Signature	6-1/2"	65-SWR-0520-S	65-SWB-0520-S	65-SWC-0520-S	1-3/8"	7.6
650	Polyolefin	6-1/2"	65-POR-0520-S	65-POB-0520-S	65-POC-0520-S	1-3/8"	8.7			
750	Urethane Polypropylene	6-1/2"	65-UPR-0520-S	65-UPB-0520-S	65-UPC-0520-S	1-3/8"	7.3			
800	Rubber on Aluminum	6-1/2"		65-RAB-0520-S-EHT		1-3/8"	8.6			
800	V-Groove Iron	6-1/2"	65-VIR-0520-S		65-VIC-0520-S	1-3/8"	12			
1000	Cast Iron	6-1/2"	65-CIR-0520-S	65-CIB-0520-S	65-CIC-0520-S	1-3/8"	12			
1000	Durastan	6-1/2"	65-DUR-0520-S	65-DUB-0520-S	65-DUC-0520-S	1-3/8"	9			
1000	High Temp. Nylon	6-1/2"	65-HNR-0520-S			1-3/8"	9			
1000	Pinnacle	6-1/2"	65-PNR-0520-S	65-PNB-0520-S	65-PNC-0520-S	1-3/8"	9			
1000	Solid Urethane	6-1/2"		65-MUB-0520-S		1-3/8"	7.6			
1050	Urethane on Aluminum	6-1/2"	65-UAR-0520-S		65-UAC-0520-S	1-3/8"	8.5			
1050	Urethane on Iron	6-1/2"	65-UIR-0520-S		65-UIC-0520-S	1-3/8"	9			
1200	GT	6-1/2"		65-GTB-0520-S		1-3/8"	9			
1500	Forged Steel	6-1/2"	65-FSR-0520-S		65-FSC-0520-S	1-3/8"	12			
2000	Nylatron HD	6-1/2"		65-NYB-0520-S		1-3/8"	9.5			
6"	2"	410	Rubber on Iron	7-1/2"	65-RIR-0620-S		65-RIC-0620-S		10	
		525	Performance TPR	7-1/2"	65-RPR-0620-S	65-RPB-0620-S	65-RPC-0620-S		7.7	
		600	Signature	7-1/2"	65-SWR-0620-S	65-SWB-0620-S	65-SWC-0620-S		9	
		700	Polyolefin	7-1/2"	65-POR-0620-S	65-POB-0620-S	65-POC-0620-S		8.7	
		820	Rubber on Aluminum	7-1/2"		65-RAB-0620-S-EHT			10	
		900	Urethane Polypropylene	7-1/2"	65-UPR-0620-S	65-UPB-0620-S	65-UPC-0620-S		7.7	
		1000	Omega	7-1/2"	65-UOR-0620-S	65-UOB-0620-S	65-UOC-0620-S		12	
		1000	V-Groove Iron	7-1/2"	65-VIR-0620-S		65-VIC-0620-S		13	
		1200	Cast Iron	7-1/2"	65-CIR-0620-S	65-CIB-0620-S	65-CIC-0620-S	1-9/16"	13	
		1200	Durastan	7-1/2"	65-DUR-0620-S	65-DUB-0620-S	65-DUC-0620-S	Optional 2-1/2"	10	
	1200	High Temp. Nylon	7-1/2"	65-HNR-0620-S				10		
	1200	Pinnacle	7-1/2"	65-PNR-0620-S	65-PNB-0620-S	65-PNC-0620-S		10		
	1200	Solid Urethane	7-1/2"		65-MUB-0620-S			9		
	1230	Torus	7-1/2"		65-UAB-0621-S			11		
	1230	Urethane on Aluminum	7-1/2"	65-UAR-0620-S		65-UAC-0620-S		11		
	1230	Urethane on Iron	7-1/2"	65-UIR-0620-S		65-UIC-0620-S		12		
	1500	GT	7-1/2"		65-GTB-0620-S			10		
	1800	Forged Steel	7-1/2"	65-FSR-0620-S		65-FSC-0620-S		13		
	2000	Nylatron HD	7-1/2"		65-NYB-0620-S			11		
	8"	2"	500	Rubber on Iron	10-1/8"	65-RIR-0820-S		65-RIC-0820-S		11
600			Performance TPR	10-1/8"	65-RPR-0820-S	65-RPB-0820-S	65-RPC-0820-S		9.1	
700			Signature	10-1/8"	65-SWR-0820-S	65-SWB-0820-S	65-SWC-0820-S		10	
800			Polyolefin	10-1/8"	65-POR-0820-S	65-POB-0820-S	65-POC-0820-S		9.1	
1000			Rubber on Aluminum	10-1/8"		65-RAB-0820-S-EHT			11	
1000			Urethane Polypropylene	10-1/8"	65-UPR-0820-S	65-UPB-0820-S	65-UPC-0820-S		9.1	
1050			Torus	10-1/8"	65-VIR-0820-S		65-VIC-0820-S		16	
1200			Omega	10-1/8"	65-UOR-0820-S	65-UOB-0820-S		2-1/4"	13	
1400			Cast Iron	10-1/8"	65-CIR-0820-S	65-CIB-0820-S	65-CIC-0820-S	Optional 2-1/2" & 3-1/2"	16	
1400			Durastan	10-1/8"	65-DUR-0820-S	65-DUB-0820-S	65-DUC-0820-S		11	
1400			Pinnacle	10-1/8"	65-PNR-0820-S	65-PNB-0820-S	65-PNC-0820-S		11	
1500			Solid Urethane	10-1/8"		65-MUB-0820-S			10	
1500			Torus	10-1/8"		65-UAB-0821-S			12	
1500			Urethane on Aluminum	10-1/8"	65-UAR-0820-S		65-UAC-0820-S		12	
1500			Urethane on Iron	10-1/8"	65-UIR-0820-S		65-UIC-0820-S		13	
1800			GT	10-1/8"		65-GTB-0820-S			11	
2000	Nylatron HD	10-1/8"		65-NYB-0820-S			12			

To order a rigid caster, change the "S" to "R" in the model number. For example: "65-CIR-0520-R". To order a rig only, omit the blue letters. For example: "65-0520-S". Dimensions shown are nominal. If precise dimensions are required, consult your RWM representative. For approximate weight of our rigid caster, deduct 1.5 pounds.