

PNEUMATIC CASTERS

RWM's Pneumatic Casters are designed for applications that require a cushioned ride, including but not limited to carts and trucks carrying sensitive materials and parts, glass, ceramics, electronics, chemicals, sound and lighting equipment, movie production equipment (ie: cameras), etc. Pneumatic casters are also useful on uneven floors and outdoor environments.

46 SERIES

Swivel Section: Cold formed top plate, yoke and button are all heat treated to prevent brinelling, improve swivel action and increase service life. Load and thrust bearings are hardened and ground and rotate on hardened raceways. All swivel sections are equipped with a lubrication fitting for field maintenance. Notched yokes are standard. Zinc plated finish to protect from corrosion.

65 SERIES

Raceway Design: Patented Kingpinless™ single ball bearing precision machined raceway, to 53 Rockwell C minimum, lube fittings for swivel bearings and for wheel bearings. Swivel section features a 2-3/8" diameter raceway with 3/8" ball bearings. Notched yokes are standard. Zinc plated finish to protect from corrosion.

76 SERIES

Raceway Design: Patented Kingpinless™ single ball bearing precision machined raceway hardened to 53 Rockwell C minimum. Swivel section features a 3" diameter raceway with 1/2" ball bearings. Lube fittings for swivel bearings and wheel bearings. Notched yokes are standard. Laguna blue powder coat finish.

95 SERIES

Raceway Design: 4-1/2" diameter raceway with 3/4" diameter carbon steel balls. Precision machined and hardened to 53 Rockwell C minimum. Load and thrust are accommodated by our patented Kingpinless™ design. Sealed raceway is standard. Swivel Top Plate - SAE 1045 hot steel forging. Swivel Yoke Base - SAE 1045 hot steel forging. Laguna blue powder coat finish.

125 SERIES

Raceway Design: Patented Kingpinless™ single ball bearing precision machined raceway hardened to 53 Rockwell C minimum. 7" diameter raceway with 3/4" diameter ball bearings. Laguna blue powder coat finish.

APPLICATIONS

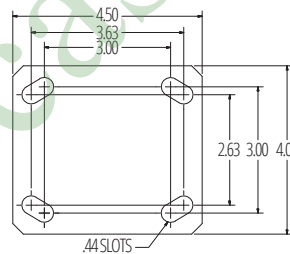
Other applications for Pneumatic Casters may include luggage carts, platform trucks, material handling carts, warehouse and factory applications, job site tool boxes, security cages, stock carts, shelf trucks, mobile storage racks, etc.



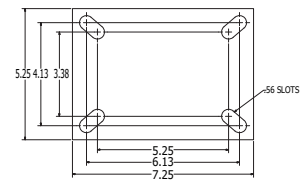
2-125-FNT-2365-S-SL

STANDARD MOUNTING PLATES

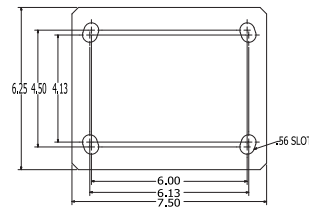
46 & 65



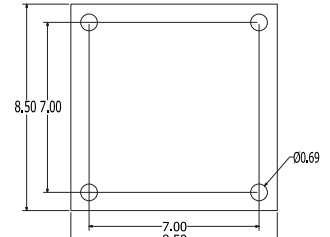
76 Series



95 Series



125 Series



OPTIONS

BRAKES

- CWB** Cam Wheel Brake
- FCWB** Face Contact Wheel Brake
- PCWB** Poly Cam Wheel Brake

SWIVEL LOCKS

- DSL** Demountable Swivel Lock*
- HDSL** Heavy Duty Demountable Swivel Lock
- LSL** L-Type Swivel Lock
- SL** Swivel Lock

FLOOR GUARDS

- FG** Foot Guard

YOKES, RACEWAYS AND FINISHES

- NY** Notched Yoke
- SR** Sealed Raceways
- ZP** Zinc Plated

*When ordering the Demountable Swivel Lock (DSL), you must also order the Notched Yoke (NY).

Wheel Diameter	Wheel Width	Capacity lbs.	Wheel Type	Overall Height	Swivel Caster Model Numbers			Swivel Lead	Approx Weight lbs.
					Roller Bearing	Ball Bearing	Tapered Bearing		
8"	2.80/4"	300	FN Pneumatic	11"	46-FNR-0828-S	46-FNB-0828-S		2-5/8"	9.5
		300	FN Pneumatic	11"	65-FNR-0828-S	65-FNB-0828-S			13.0
		600	FN Pneumatic	11"	2-65-FNR-0828-S	2-65-FNB-0828-S			20.0
10"	4.10/4"	480	FN Pneumatic	13"	46-FNR-1041-S	46-FNB-1041-S		3-1/4"	11.0
		480	FN Pneumatic	13"	65-FNR-1041-S	65-FNB-1041-S	65-FNT-1041-S		14.5
		960	FN Pneumatic	13"	2-65-FNR-1041-S	2-65-FNB-1041-S	2-65-FNT-1041-S		22.0
12"	4.10/6"	500	FN Pneumatic	15-1/2"	46-FNR-1241-S	46-FNB-1241-S		3-1/2"	14.5
		500	FN Pneumatic	15-1/2"	65-FNR-1241-S	65-FNB-1241-S	65-FNT-1241-S		15.0
		1000	FN Pneumatic	15-1/2"	2-76-FNR-1241-S	2-76-FNB-1241-S	2-76-FNT-1241-S		35.0
14"	5.30/6"	870	FN Pneumatic	17-3/4"	76-FNR-1448-S	76-FNB-1448-S	76-FNT-1448-S	4-1/2"	28.0
		1740	FN Pneumatic	17-3/4"	2-76-FNR-1448-S	2-76-FNB-1448-S	2-76-FNT-1448-S		41.0
16"	4.80/8"	1000	FN Pneumatic	19-1/8"	76-FNR-1648-S		76-FNT-1648-S	4-1/2"	35.0
		1230	FN Pneumatic	19-1/8"			95-FNT-1648-S ^{***}	4"	45.0
		2000	FN Pneumatic	19-1/8"	2-76-FNR-1648-S		2-76-FNT-1648-S	4-1/2"	53.0
		2460	FN Pneumatic	19-1/8"			2-95-FNT-1648-S ^{***}	4"	45.0
18"	5.70/8"	1170	FN Pneumatic	21-1/4"	76-FNR-1857-S		76-FNT-1857-S	5"	40.0
		2340	FN Pneumatic	21-1/4"	2-76-FNR-1857-S		2-76-FNT-1857-S		60.0
18"	5.70/8"	1560	FN Pneumatic	21-1/2"	95-FNR-1857-S ^{***}		95-FNT-1857-S ^{***}	4-1/2"	55.0
		3120	FN Pneumatic	21-1/2"	2-95-FNR-1857-S ^{***}		2-95-FNT-1857-S ^{***}		82.0
21"	6.90/9"	2420	FN Pneumatic	24-1/4"			125-FNT-2169-S ^{****}	5"	84.5
		4840	FN Pneumatic	24-1/4"			2-125-FNT-2169-S ^{****}		130
23"	6.50/10"	2775	FN Pneumatic	26-1/4"			125-FNT-2365-S ^{****}	5"	87.0
		5550	FN Pneumatic	26-1/4"			2-125-FNT-2365-S ^{****}		135.0
25"	7.50/10"	3630	FN Pneumatic	28-3/4"			125-FNT-2575-S ^{****}	5"	90.5
		7260	FN Pneumatic	28-3/4"			2-125-FNT-2575-S ^{****}		140.0

To order a rigid caster, change the "S" to "R" in the model number. For example: "76-FNR-1857-R". To order rig only, omit the blue letters. For example: "76--1857-S". Dimensions shown are nominal. If precise dimensions are required, consult your RWM representative. For approximate weight of our rigid casters, deduct 9.6 pounds per item.

* Height may vary
^{***} 6 ply
^{****} 10 ply
 4 ply is standard. Maintain proper air pressure for best results. Capacity rating is for manual operation. For capacities of power moved loads, larger diameter or higher capacity heavy duty wheels, please consult the factory.

OPTIONAL MOUNTING PLATES

Prefix/ Top Plate Number	Mounting Plate	Bolt Hole Spacing	Bolt Size
46 & 65 SERIES			
41ST 41RT	4" x 5"	2-5/8" x 3-5/8" slotted to 3" x 4"	3/8"
42ST	4-1/2" x 6-1/2"	2-7/16" x 4-15/16" slotted to 3-3/8" x 5-1/4"	1/2"
43ST	5" x 5-1/2"	4-1/8" x 4-1/2"	3/8"
76 SERIES			
90ST* 90RT	6" x 7"	4-5/8" x 5-1/2" slotted to 4-3/8" x 5-5/8"	1/2"
95ST* 95RT	6" x 7-1/2"	4-1/2" x 6" slotted to 4-1/8" x 6-1/8"	1/2"
75ST**	4-1/2" x 6-1/2"	2-7/16" x 4-15/16" slotted to 3-3/8" x 5-1/4"	1/2"
125 SERIES			
LLST LLRT	8-1/2" x 11"	7" x 9-3/4"	5/8"