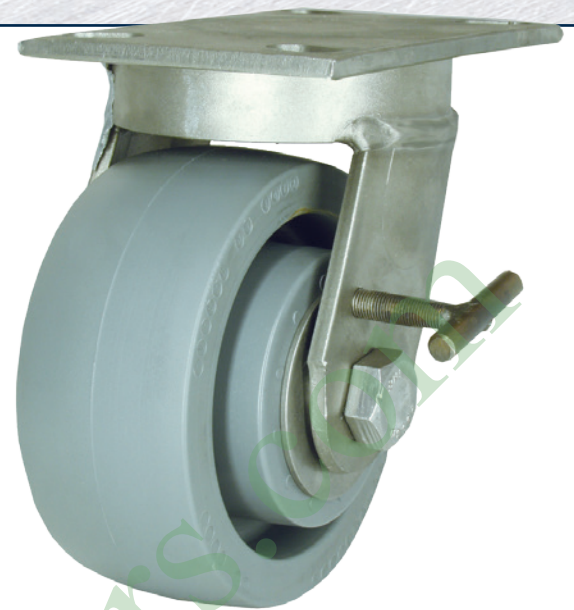


S75 STAINLESS STEEL CASTERS

RWM's S75 Stainless Steel Kingpinless™ Design Casters are ideally suited for frequent washdown applications. This caster can handle cleaning agents, steam, caustic solutions or other corrosive agents that can cause rust or corrosion. We are proud to say that these industrial casters are Made in the USA. The S75 Stainless Steel kingpinless casters are constructed of high quality 304 stainless steel for the best possible corrosion performance attributes.

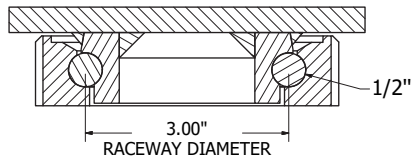


S75-GTB-0625-S-SSBB-WTHB

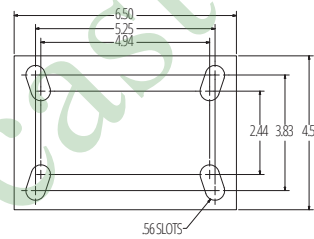
FEATURES

Raceway Design	Patented Kingpinless™ single ball bearing precision machined raceway. 3" diameter raceway with 1/2" stainless ball bearings
Capacity	Up to 2500 lbs.
Leg Thickness	1/4"
Mounting Plate Size	4-1/2" x 6-1/2" x 1/4"
Bolt Hole Spacing	2-7/16" x 4-15/16" slotted to 3-3/8" x 5-1/4"
Mounting Bolt Diameter	1/2"

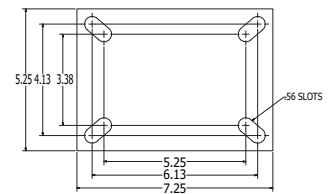
RACEWAY



STANDARD



76ST/76RT



APPLICATIONS

Food processing plant	Seafood processing plants
Food service equipment	Stock and maintenance carts
Large volume, high temperature bakery and food cooking facilities	Ingredient bins
Bakery and bread racks	Institutional service carts and equipment
Slaughter houses	Hatcheries
Fisheries	Pharmaceutical plants and laboratories

OPTIONS

BRAKES	
SCWB	Stainless Steel Cam Wheel Brake
WTHB	Stainless Welded T-Handle Brake
SWIVEL LOCKS	
SL	Swivel Lock
SEALS	
SR	Sealed Swivel Raceway
BEARINGS	
SSBB	Stainless Steel Ball Bearing
SSRB	Stainless Steel Roller Bearing
FINISHES	
EP	Electropolished Finish

CASTERS

STAINLESS STEEL

ENGINEERED TO OUTPERFORM

UP TO 2,500 LBS CAPACITY

Wheel Diameter	Wheel Width	Capacity lbs.	Wheel Type	Overall Height	Swivel Caster Model Numbers			Swivel Lead	Approx Weight lbs.
					Roller Bearing	Ball Bearing	Plain Bearing		
6"	2-1/2"	1600	Durastan	7-1/2"	S75-DUR-0625-S			1-3/8"	11.5
		1620	Urethane on Iron	7-1/2"	S75-UIR-0625-S		S75-UIT-0625-S	1-3/8"	16.5
		2300	GT	7-1/2"	S75-GTB-0625-S			1-3/8"	11.5
6"	3"	2,000	Durastan	7-1/2"	S75-DUR-0630-S			1-3/8"	12.5
		2000	Solid Urethane	7-1/2"	S75-MUB-0630-S			1-3/8"	12.5
		2000	Urethane on Iron	7-1/2"	S75-UIR-0630-S		S75-UIT-0630-S	1-3/8"	17.5
8"	2-1/2"	2000	Durastan	10-1/8"	S75-DUR-0825-S			2-1/16"	15
		2000	Urethane on Iron	10-1/8"	S75-UIR-0825-S		S75-UIT-0825-S	2-1/16"	18.5
		2400	GT	10-1/8"	S75-GTB-0825-S			2-1/16"	15
8"	3"	1600	Omega	10-1/8"	S75-UOR-0830-S		S75-UOT-0830-S	2-1/16"	19
		2500	Durastan	10-1/8"	S75-DUR-0830-S			2-1/16"	16.5
		2500	Solid Urethane	10-1/8"	S75-MUB-0830-S			2-1/16"	16.5
		2500	Urethane on Iron	10-1/8"	S75-UIR-0830-S		S75-UIT-0830-S	2-1/16"	19.5
		2500	Whisper	10-1/8"	S75-UOR-0830-S		S75-UOT-0830-S	2-1/16"	9
10"	2-1/2"	2370	Urethane on Iron	11-1/2"	S75-UIR-1025-S		S75-UIT-1025-S	2-1/4"	21.5
		2500	Durastan	11-1/2"	S75-DUR-1025-S			2-1/4"	16.5
10"	3"	2000	Omega	11-1/2"	S75-UOR-1030-S	S75-UOB-1030-S	S75-UOT-1030-S	2-1/4"	22
		2000	Rubber on Aluminum-EHT	11-1/2"	S75-RAB-1030-S		S75-RAT-1030-S	2-1/4"	20.3
		2500	Durastan	11-1/2"	S75-DUR-1030-S			2-1/4"	20
		2500	GT	11-1/2"	S75-GTB-1030-S			2-1/4"	20
		2500	Solid Urethane	11-1/2"	S75-MUB-1030-S			2-1/4"	20
		2500	Ultra Thick Urethane	11-1/2"	S75-UTR-1030-S		S75-UTT-1030-S	2-1/4"	25
		2500	Urethane on Iron	11-1/2"	S75-UIR-1030-S		S75-UIT-1030-S	2-1/4"	22.5
		2500	Whisper	11-1/2"	S75-UWB-1030-S			2-1/4"	21
12	2-1/2"	2500	Durastan	13-1/2"	S75-DUR-1225-S			2-11/16"	20.5
		2500	Urethane on Iron	13-1/2"	S75-UIR-1225-S		S75-UIT-1225-S	2-11/16"	23.5
12	3"	2280	Rubber on Aluminum-EHT	13-1/2"	S75-RAB-1230-S		S75-RAT-1230-S	2-11/16"	24.5
		2500	Durastan	13-1/2"	S75-DUR-1230-S			2-11/16"	22.5
		2500	Ultra Thick Urethane	13-1/2"	S75-UTR-1230-S		S75-UTT-1230-S	2-11/16"	28
		2500	Urethane on Iron	13-1/2"	S75-UIR-1230-S		S75-UIT-1230-S	2-11/16"	26.5
		2500	Whisper	13-1/2"	S75-UWB-1230-S			2-11/16"	25

To order a rigid caster, change the "S" to "R" in the model number. For example: "S75-DUR-0830-R". To order a rig only, omit the blue letters. For example: "S75-0830-S". Dimensions shown are nominal. If precise dimensions are required, consult your RWM representative. For approximate weight of our rigid caster, deduct 5.4 pounds.