

Baron



Features

- Double ball bearing raceways
- Octagon washer on threaded stem for easy installation
- 2" model is heat treated

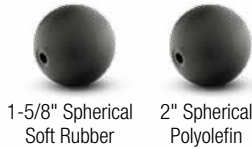
Applications

- Store Fixtures
- Furniture
- Office Equipment
- Medical Equipment

Options

- RoHS compliant zinc finish available by special order; please consult factory for details.

Wheel Selection

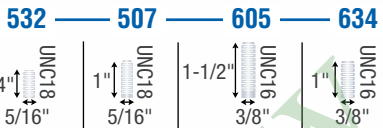


1-5/8" Spherical Soft Rubber 2" Spherical Polyolefin

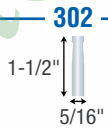
Wheel Diameter (Inches)	Mounting Height (Inches)	Swivel Radius (Inches)	Tread Material	Finish Type	Dynamic Load (Pounds)	Base Model # (Add fastening code)	Fastening Selection*
1-5/8"	2-5/16"	1-3/4"	Spherical Soft Rubber	Metalized Brass	70	PBH16...MB-3RD	Threaded: 532, 507 Grip Neck: 302
				Windsor Antique	70	PBH16...WA-3RD	Grip Ring: 223, 211 Plate: 113
2"	2-5/8"	2-1/4"	Spherical Polyolefin	Bright Chrome	80	PBH20...BC-3ED	Threaded: 532, 507, 634, 605
				Metalized Brass	80	PBH20...MB-3ED	Grip Neck: 302
				Windsor Antique	80	PBH20...WA-3ED	Grip Ring: 222, 223, 211 Plate: 113

*To order, include blue fastener code in Base Model Number. Example: PBH16507MB-3RD

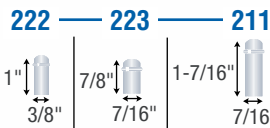
Threaded



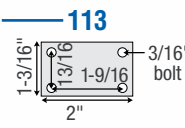
Grip Neck



Grip Ring



Top Plate



Finish Options



Metalized Brass



Windsor Antique



Bright Chrome

Socket Options

Shepherd has many solutions to help you mount your casters to your equipment quickly and easily. See pages 56-57 for more information.



Connects casters to wood



Connects casters to round tubes



Connect casters to PVC pipe legs



Weldable caster mount



Connects casters to square tubes



Corner brackets